

Historic, archived document

Do not assume content reflects current scientific knowledge, policies, or practices.

62,09

ORNAMENTAL SHRUBS AND TREES

FRUIT TREES

SHRUB AND TREE SEED

LIBRARY
BORITED
★ MAR 20 1934 ★
U. S. Department of Agriculture

1934



Germain's
Store in 1871



Horticultural Specialists



Present Location
Sixth and Main Sts.



Our Down Town store at 6th and Main, Los Angeles, is the headquarters for garden lovers from all over the world. You are always welcome to visit our store which, we have been told, is the most interesting of its kind in America.



Germain's Tree and Shrub Bulletin will help you Plant the Home Grounds

In this our 1934 catalog devoted to Fruit Trees, Small Fruits, and Ornamental Plants and Trees of all kinds, we have endeavored to include varieties that are adapted particularly to conditions in the Great Southwest. Many fruit sorts are excellent for both commercial and home use but all are particularly satisfactory for the few

trees that are usually planted in the home orchard or garden.

Among the shrubs, shade trees, etc., are many varieties that are equally successful in both coastal and interior regions. Many newer introductions are listed and in every case have proved themselves an improvement

over some older plant or in new species have been tested sufficiently to justify their use in this section.

We cordially invite you to visit our nursery and growing grounds in Van Nuys. Here are to be found many rare and beautiful plants that are being tried under our own conditions.

How to ORDER BY MAIL---from GERMAIN'S

Use the order sheet enclosed in catalogue if possible. In the space reserved for address, write plainly your name, postoffice, nearest express or freight office (if different from postoffice), County and State. Keep a duplicate copy of your order for comparison. Remittances may be made by Express Money Order, P. O. Money Order or Bank Draft; if you remit in stamps or cash, send in a Registered letter. We must decline sending goods C. O. D. unless 25 per cent of their value accompanies the order.

Free Delivery for Certain Quantities of Seeds

We deliver free, in the United States and Possessions, and Mexico, by Parcel Post or Express at our option, all Vegetable and Flower Seeds by the Packet, Ounce and 1/4 Pound, up to and including ten pounds.

All other articles, including bulbs, are priced F.O.B. Los Angeles and will be forwarded express collect or, if desired by parcel post, postage must be added as per the following table.

Parcel Post. Shipments of seeds, bulbs, tools, plants and garden supplies (excepting certain insecticides containing poisons and all liquids)

may be sent by mail to all parts of the United States. We advise forwarding all small orders and packages up to 20 pounds in this way.

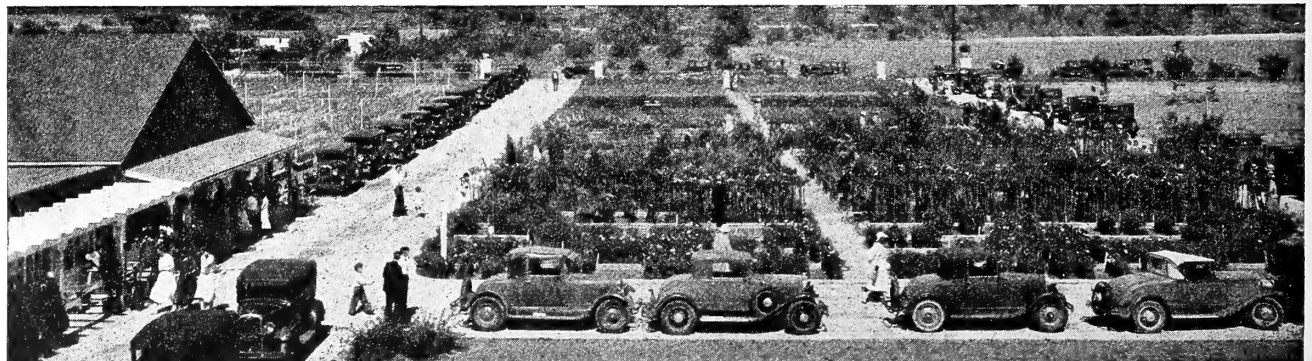
Parcel Post Rates Within U. S. and Possessions from Los Angeles, Calif.			
Zone	Distance from Los Angeles	1st Lb. or Frac-tion	Each Addit'n'l Lb. or Frac-tion
1st.	Within 50 miles.....	7c	1c
2nd.	50-150 miles.....	7c	1c
3rd.	150-300 miles.....	8c	2c
4th.	300-600 miles.....	8c	4c
5th.	600-1000 miles.....	9c	6c
6th.	1000-1400 miles.....	10c	8c
7th.	1400-1800 miles.....	12c	10c
8th.	All over 1800 miles.....	13c	12c

Packages of seed weighing 8 oz. or less can be forwarded anywhere in the United States at a cost of 1c for each 2 ozs. or fraction thereof.

Insurance Extra. 5c for each package up to \$5, 8c up to \$25, 10c up to \$50.

Like all reputable seed houses Germain's has adopted the standard "non-warranty" clause of the American Seed Trade Association.

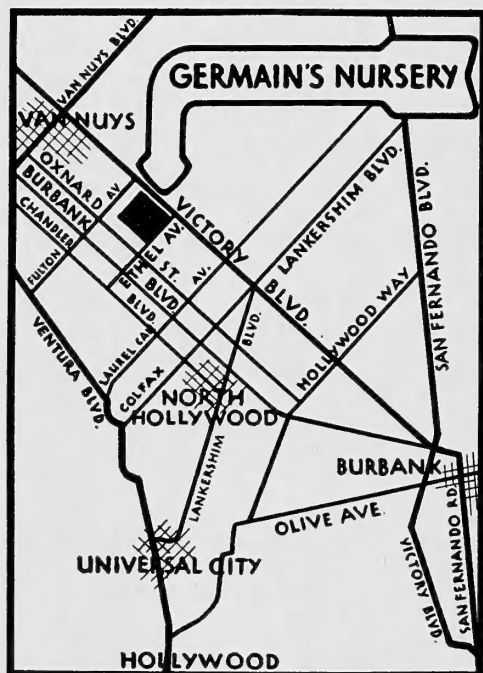
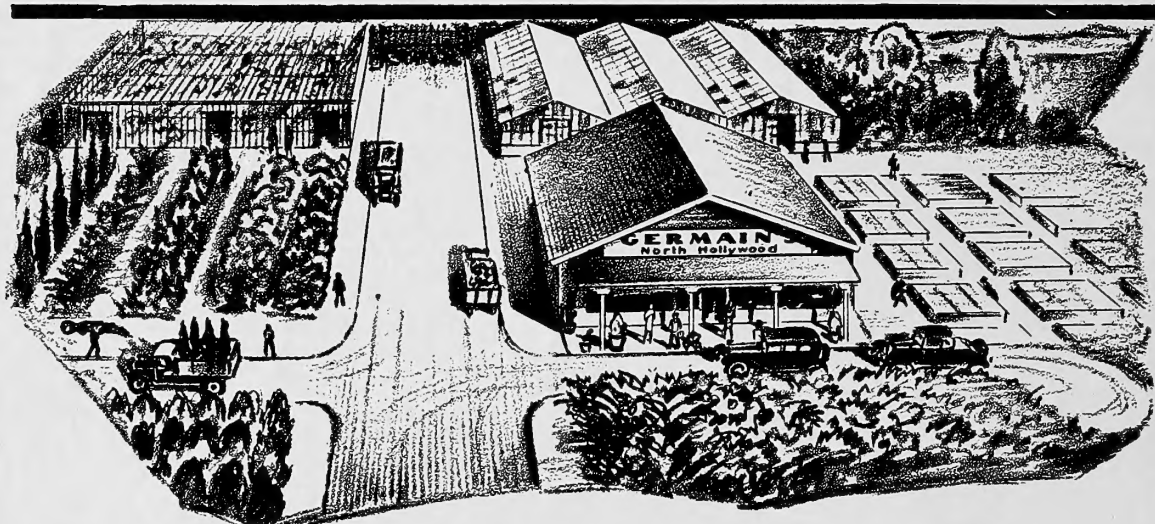
Non-Warranty. The Germain Seed and Plant Company gives no warranty, express or implied, as to the description, quality, productiveness, or any other matter of seeds, bulbs, plants or trees they send out, and they will not be responsible in any way for the crop.



Our Valley Nursery and Seed Establishment is located in Van Nuys on Ethel Avenue between Oxnard and Victory. A complete stock is carried here of all our lines. You are always welcome. Come and visit us.

An Invitation

to visit Our Valley Store and Nursery *in Van Nuys*



How to Get There

The above map shows how conveniently located is the new nursery and seed store in Van Nuys. From Los Angeles, the motorist can choose the closest way from his home—San Fernando Road, Victory Blvd., or Ventura Blvd.

12 Acres of Shrubs, Plants and Flowers

You will be delighted by a visit to the new Germain nursery and seed store in Van Nuys. Besides a complete line of bulbs and seeds, there are on hand plants, shrubs, roses and trees in various stages of growth, ready to plant for the beautification of your home or estate.

Rare Plants from All Over the World

Rare flora from many parts of the world thrive in our Southern California climate. Through their world-wide connections Germain's can offer these exotic plants and shrubs for your selection. See them growing at the new nursery.

A Complete Line

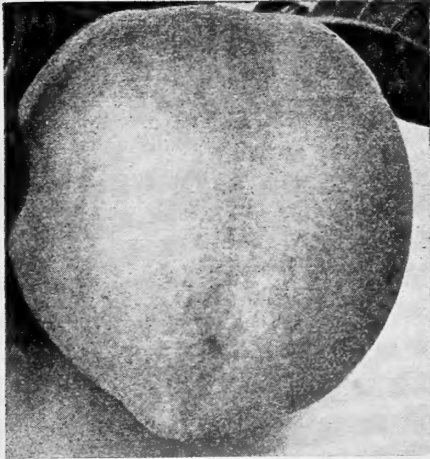
No matter what you are going to plant, you will find the seed, seedling, bulb, plant, or tree at Germain's, and there is a complete representation of Germain's stock at our Valley Nursery and Seed Establishment.

GERMAIN'S

SIXTH AND MAIN - LOS ANGELES
 ETHEL AVENUE, BETWEEN OXNARD AND VICTORY
 VAN NUYS

NEW FRUITS FOR THE GARDEN

On this page you will find several new and interesting fruit varieties. These have been tested thoroughly and are a distinct improvement over older types both for the garden and orchard.



BABCOCK PEACH

THE NEW BABCOCK PEACH

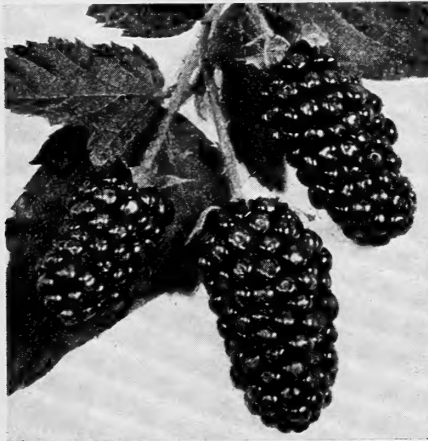
(Freestone)

The most important feature of the Babcock is its adaptability to the subtropical climate that we have in Southern California and the fact that it will always bear a crop every year regardless of winter temperatures. Most Peaches, whenever we have a very mild winter with some warm weather in February, react unfavorably and do not set a normal crop, so that a crop is lost on most varieties about every third or fourth year. This is not true of Babcock because it has as one of its parents the Chinese Peen-to Peach, which is resistant to this prolonged dormancy.

Entirely aside from the above feature, Babcock is an excellent Peach. It ripens early, in the latter part of June when Peaches are still very scarce, is white fleshed, has a beautiful red cheek, and is of exceptionally high quality, being sweet, juicy and richly flavored, much superior to most other early Peaches which are frequently rather watery.

Another favorable thing about the Babcock is the fact that it is extremely firm and remains so either when left on the tree or when picked. It does not soften up quickly or bruise readily, as do most early white Peaches, which makes it very fine for shipping or market. If left on the trees after the color has developed, the Peach will increase in size without becoming overripe and does not fall off for several weeks.

4 to 6-foot trees 85c each; \$9.00 dozen.

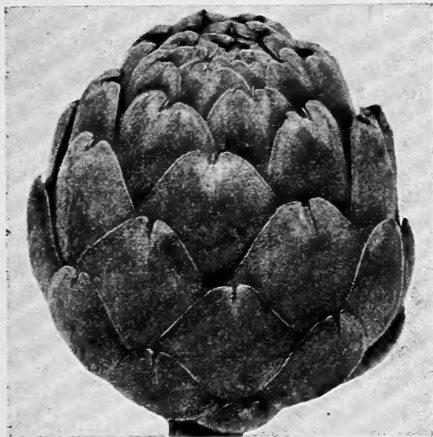


KOSMO BLACKBERRY

THE KOSMO BLACKBERRY

We have observed this berry for two years and it has appealed to us as being the finest eating berry that we know of, much surpassing the Young-berry both in size and sweetness. It ripens quite early and may be picked over a period of about one month, beginning early in June. Then it also has a crop almost as large in August. The berries somewhat resemble the old Mammoth or Cory Thornless, but whereas the Cory Thornless did not bear very well, the Kosmo never fails to bear a large crop. The berries are very large, jet black, extremely sweet and juicy, and the core is almost non-existent while the seeds are so few and soft as to be unnoticeable. The vines are extremely strong in growth and need considerable room in which to grow.

35c each; 3 for \$1.00; \$3.00 dozen; \$20.00 per 100.



ARTICHOKE

ARTICHOKE

GREEN GLOBE. Artichokes are a delicious vegetable. They are easily grown in back yards, along fences, and in the vegetable garden, requiring very little care and attention after planting. The Green Globe Artichoke grows to a height of three to five feet with numerous branches and the roots should be set about five feet apart. Strong field divisions.

20c each; \$2.00 dozen. Postage 25c per dozen extra.



PANAMA RHUBARB

RHUBARB

One of the most delicious of fruits or vegetables whichever you choose to call it and the types developed in recent years make it possible to have rhubarb from your own garden all through the year.

PANAMA. A variety that grows all the year round. Yields twice as much as any other rhubarb and requires half the amount of sugar. It is comparatively free from acid and requires no peeling.

25c each; \$2.50 dozen.

WAGNER'S GIANT. A standard sort that is well known. Grows very rapidly and is hardy in any climate. Stalks are large and have a very fine flavor.

15c each; \$1.50 dozen.

GIANT CHERRY. Stalks of large size and excellent flavor. One of the prime favorites in Rhubarb. Large divisions.

25c each; \$2.50 dozen.

DECIDUOUS FRUIT TREES

Contained in the following you will find a complete list of the various fruit trees, vines, and berry plants that we have to offer for this season. After the description of each variety we have noted the month of ripening. All prices are quoted f. o. b. Los Angeles, and due to market changes, are subject to change without notice. In general we supply one dozen trees for the price of ten. Please write us for special prices in large quantities.

PLANTING INSTRUCTIONS—On receipt of shipment unpack it immediately, and if not planted at once place the roots of the trees in a trench, cover them with soil, and water thoroughly, so as to settle the dirt well about the roots. For this purpose it is well to open the bundle.

If on account of delay en route the trees look withered bury them entirely in wet soil for a few days until they have recovered.

It is of great importance to dig holes deeper and larger than is necessary to admit all the roots in their natural position, keeping the surface and subsoil separate. Any injured roots should be cut off with a sharp knife. Fill the hole with the surface soil, so that the tree, after the earth has settled, will stand about as deep as it did in the nursery a line which can usually be noted by a difference in color. Settle the soil well around the roots by filling the hole with water. Never let manure come in contact with the roots, but it can be used as a top dressing.

Grass or weeds should never be allowed to grow around the trees. The ground should be thoroughly cultivated, so that the finely pulverized soil forms a mulch over the whole surface of the ground.

Apples, Apricots, Peaches, Pears etc., should be pruned back according to the size of the tree. Tree protectors should be used against sunburn.

Guarantee. While we exercise the greatest care to have all stock true to its name, it is understood and agreed that should any stock prove untrue to name we shall be held liable only for the sum paid for the stock that may prove untrue and shall not be held liable for any greater amount.

APPLES



60c Each
\$6.00 Dozen

DELICIOUS—It is large, uniform in size, long and tapering. Skin is yellow with a crimson cheek on the sunny side. Flesh is white, fine-grained, juicy, crisp, melting, sweet and slightly acid. November.

GRAVENSTEIN—A popular market, shipping and culinary variety. Skin greenish yellow, striped with red shadings; flesh yellow, crisp, juicy and tender; texture good. August.

JONATHAN—Medium size, roundish and oval; skin bright red, on the sunny side quite dark to almost black; flesh a delicate cream with a faint suggestion of red; flavor excellent. October.

RED JUNE—Fruit roundish and uniform, having a tender, smooth, glossy skin of pale yellow or greenish overspread with a deep red. Flesh is white tender, juicy and of a rich sub-acid flavor. July.

BELLFLOWER—Very large; oblong; skin smooth, pale lemon yellow; flesh tender, juicy, crisp with a sprightly sub-acid flavor; one of the very best. October.

TRANSCENDENT CRABAPPLE—A beautiful variety of the Siberian Crab; large, red and yellow; tree a remarkably strong grower.

WHITE WINTER PEARMAIN—Fruit medium to large, oblong; skin pale yellow with a brilliant blush on sunny side; flesh yellow, fine-grained, juicy and tender. A good keeper. November.

YELLOW NEWTON PIPPIN—Large; yellow and brownish red cheek; firm, crisp, juicy, with a very rich, high flavor. Generally considered the best winter apple in California. December.

APRICOTS
50c Each—\$5.00 Dozen

MOORPARK—One of the largest, most popular and widely disseminated apricots; deep orange or brownish red; flesh quite firm, bright orange; juicy, with a rich flavor. August.

NEWCASTLE—Medium size, round, well shaped; a shade smaller than the Royal and two or three weeks earlier. July.

ROYAL—A standard variety; skin dull yellow, with an orange cheek; flesh pale orange, firm and juicy, with a rich vinous flavor. July.

TILTON—Large oval, slightly compressed; flesh firm, yellow, and parts readily from the stone; heavy and regular bearer. July.

CHERRIES



60c Each
\$6.00 Dozen

BING—A valuable market and shipping cherry. Fruit of large size, firm, heart-shaped and regular; skin smooth, glossy, deep maroon verging to black in color; flesh sweet. June.

BLACK TARTARIAN—Bright purplish black; flesh purplish; thick, juicy, very rich and delicious; tree a remarkably vigorous, erect and beautiful grower. June.

RICHMOND (PIE CHERRY)—Red; acid; valuable for cooking; productive. July.

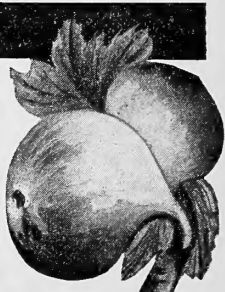
ROYAL ANN—A magnificent cherry of the largest size; pale yellow, becoming amber in the shade, with a bright red cheek; flesh firm, juicy and sweet. Free grower and enormous bearer. July.

JUJUBE
(CHINESE DATE PLUM)
\$1.00 Each

A native of China bearing date-like fruit that is equally good eaten fresh or made into jam.

LANG—Large, pear-shaped fruit, 1½ to 2 inches long. Produces a great abundance of fruit and often bears the first year. October.

FIGS



50c Each
\$5.00 Dozen

KADOTA—Medium sized; thin, white skin; pulp white to pink. One of the best for canning, preserving and pickling. August.

MISSION (CALIFORNIA BLACK)—The well-known local variety; fruit large, dark purple, almost black when fully ripe; makes a good dried fig; tree grows to large size and bears immense crops. Mid-summer.

WHITE ADRIATIC—Very large, elongated, yellowish-green fruit with a short neck; flesh bright red, somewhat coarse but of excellent quality. A strong-growing prolific tree.

BROWN TURKEY—Often called Black Spanish or Black San Pedro. Large fruit of excellent quality. Long, purple color turning deeper as it matures with rich strawberry red meat. Very sweet and juicy.

NECTARINE
50c Each—\$5.00 Dozen

BOSTON—Large, bright yellow with red cheek; flesh yellow, sweet and pleasant flavor; freestone. The leading yellow fleshed nectarine. August.

GOWER—We strongly recommend it for home and commercial planting. Fruit very firm, freestone, and almost completely splashed with crimson. Ships like a clingstone peach. Very early; delicious flavor. July.

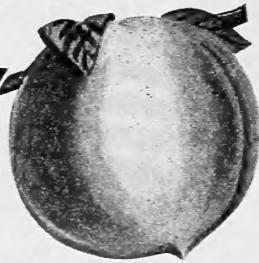
STANWICK—Very large, almost globular, often as large as a peach; skin pale, greenish-white, shaded into deep rich violet in the sun; flesh white tender, juicy and delicious. August and September.

DECIDUOUS FRUIT TREES

PEACHES

PEACHES

50c Each
\$5.00 Dozen



Freestone

ALEXANDER—Medium to large; greenish white, nearly covered with a deep, rich red; flesh white, very juicy and sweet with brisk, agreeable flavor. Very early. July.

AUSTRALIAN SAUCER—Obtains its name from its peculiar flattened shape; small, skin white with red cheek; flesh white, very sweet and delicious. One of the few satisfactory peaches for the hot interior. June.

BABCOCK—See page 5.

EARLY CRAWFORD—A magnificent, large, yellow peach of good quality. Its size, beauty and productivity make it one of the most popular varieties both for home use and commercial planting. July.

EARLY IMPERIAL—For a number of years this variety has been the leading yellow freestone for commercial and home use. Fruit medium size with small pit; skin yellow, shaded with crimson; flesh yellow, rich and firm. Late June to July.

ELBERTA—Very large; skin golden yellow where exposed to the sun; flesh yellow, juicy, rich, sweet and splendidly flavored; tree very prolific. It is a perfect freestone and one of the most successful market varieties. August.

J. H. HALE—Smooth skin, almost fuzzless. Very firm. Ships almost like an apple. Yellow freestone; flesh tender, excellent quality. Larger than the Elberta and ripening about the same period. August.

LATE CRAWFORD—A quality market, shipping and drying peach. Fruit round-oval, compressed, with unequal halves. Skin deep yellow with a red cheek. Flesh deep yellow, of good substance and separates freely from the pit. Early August.

LOVELL—Fine for canning, drying or shipping. Fruit nearly round and regular in size and shape; skin clear yellow with a marbled blush; flesh yellow, firm and of fine flavor. August.

MAYFLOWER—It is absolutely red all over, with white flesh of excellent flavor. As large as Alexander and ripens three weeks earlier. June.

MILLER'S LATE—A very satisfactory late variety of large size and fine flavor. Flesh is firm, juicy, and yellow in color. Probably the latest to bear. October.

SALWAY—Fruit large; skin of greenish-yellow with crimson cheek. Flesh clear yellow; tender, rich, sweet and of good quality. September.

PEACHES

Clingstone

50c Each—\$5.00 Dozen

ORANGE CLING—Recommended as one of the best. Fruit is large, uniform and beautiful golden color. Flesh golden, juicy and sweet. August.

PALORA CLING—Large yellow cling, with faint blush; of fine texture; firm and rich; one of the best varieties for canning. August.

STRAWBERRY CLING—Large, yellow, striped with red; flesh white, red around pit; heavy and uniform bearer. September.

TUSCAN CLING—Large, yellow; heavy bearer and one of our best Clings; fine shipper. In great demand by canners on account of its early ripening. July.

PERSIMMONS

75c Each—\$7.50 Dozen

FUYU—A new variety that promises to become a leading commercial sort. Fruit is never astringent. Medium size fruit of deep red color.

HACHIYA—Fruit very large oblong, conical pointed toward the apex; skin bright red with occasional dark spots or blotches, flesh deep yellow, soft and jelly-like when ripe.

PEARS

60c Each

\$6.00 Dozen



BARTLETT—Large; smooth; clear yellow; flesh white, juicy, buttery and highly perfumed. The most popular sort in this State; the best early variety and has no competitor for market or canning. August.

DOYENNE DU COMICE—Large, fine yellow, lightly shaded with russet and crimson; melting, buttery, rich, sweet, slightly aromatic. A standard market variety. October.

SECKEL—Rather small; regularly formed; yellow with russet red cheek; flesh cream color; flavor rich, spicy, unique and characteristic. Excels all other sorts in quality. October.

WINTER NELIS—Probably the finest winter variety so far produced. Fruit medium and of a roundish formation; skin yellowish, flesh cream colored, fine grained, and full of rich, sweet, aromatic juice. December.

QUINCE

50c Each—\$5.00 Dozen

APPLE OR ORANGE—Large; roundish, with short neck; beautiful bright golden yellow; an old favorite. September.

SMYRNA—Extremely large; elongated; lemon yellow; cooks tender and has a fine flavor; long keeper; tree strong grower with heavy foliage; very prolific. October.



PLUMS

60c Each

\$6.00 Dozen

BURBANK—Large; rich cherry red; slightly mottled with yellow; flesh deep yellow, juicy, very sweet when fully ripe; bears early and is extremely productive. August.

DAMSON—Perhaps more widely planted and better known on the markets than any other plum. Excellent for preserves, jellies, pies, etc. Fruit small, roundish; skin purple, with a thick blue bloom; flesh melting juicy, sub-acid. September.

KELSEY'S JAPAN—Very large; greenish yellow, covered with red on the sunny side; flesh very solid and firm when ripe; juicy, and with a rich vinous flavor. August.

SANTA ROSA—Regarded as one of the best Japanese types of plums. Very large; deep purplish crimson color, with pale blue bloom. Flesh yellow, streaked and shaded crimson. June.

SATSUMA—Fruit large, nearly round; dark red, flesh dark red; solid color from skin to pit; firm, rather juicy, fair flavor; pit very small. Extremely productive. August.

WICKSON—Very large; yellow, overlaid with glowing carmine with a white heavy bloom; flesh firm, sugary, delicious; pit small. Remarkable for long keeping. August.

PLUMCOTS

60c Each—\$6.00 Dozen

APEX—This fruit, as indicated by its name, is a very satisfactory combination of the Apricot and the Plum. Large, round, yellow, rich and aromatic. June.

PRUNES

60c Each—\$6.00 Dozen

FRENCH IMPROVED (PETITE D'AGEN)—Identical with the French prune, but with fruit running to larger sizes, and the trees being of a more willowy habit. August.

IMPERIAL—The tree is a very heavy bearer of extra large fruits. Dried, the fruit averages forty to fifty to the pound. August.

TRAGEDY—Large, dark purple, yellowish green meat rich and sweet. A fine table prune. July.

POMEGRANATES

50c Each—\$5.00 Dozen

WONDERFUL—The largest and most attractive variety. Valuable for shipping. Pulp rich garnet with an abundance of juice, dark as port wine; exquisite flavor.

CITRUS, TROPICAL AND NUT FRUITS



The photograph shows the quality of Germain's Citrus Trees

All are at least 5/8" caliper expertly budded from excellent stock

ORANGE

\$1.25 Each

NAVEL—The world wide famous California Orange. Fruit large and seedless. Flesh juicy, sweet and highly flavored. Ripens November.

VALENCIA—Sharing the popularity of the Navel, and often bringing the highest prices. Ripens after the Navel. Fruit medium size, few seeds, tender, sweet and delicious. May to October.

LEMON

\$1.25 Each

EUREKA—This is the most commonly grown and leading variety. Almost thornless. Fruit of good even size and splendid quality. Practically seedless.

GRAPEFRUIT

\$1.25 Each

MARSH'S SEEDLESS—Extra large, nearly seedless. It has a very fine flavor. Best of all grapefruits. Strong grower and heavy bearer.

TANGERINE

\$1.25 Each

DANCY—Very popular Mandarin variety. Skin orange red, meat juicy and sweet, few seeds. Vigorous and prolific. March.

LIMES

\$1.50 Each

MEXICAN LIME—The strongly acid green fruits of small size, used in the soda fountains, are of this old standard variety. A semi-dwarf tree, ripening fruits all through the year.

SWEET LIME—While the fruits of this variety have the characteristic lime flavor, the juice is so sweet that it may be taken without sugar. Large and juicy.

AVOCADO

\$1.75 Each

FUERTE—Skin smooth, of greenish color; flavor excellent with a high percentage of oil. One of the standard winter ripening varieties.

PUEBLA—Medium size, roundish-oval; skin smooth, glossy purple, medium thick; flesh very rich; bears young and heavily. Ripens in winter months.

NUT TREES



Southern California is the finest nut growing country in the world. A tree or two in the back yard garden will supply all your own needs and the needs of some friends also.

ALMONDS

50c Each—\$5.00 Dozen

NE PLUS ULTRA—A sturdy and rather upright grower; extremely prolific; producing its nuts in bunches.

NON PAREIL—Of a weeping style of growth, but still forms a beautiful tree; an extraordinary heavy and regular bearer, with very thin shell.

TEXAS PROLIFIC—Nut medium size; shells perfect and well filled. A very heavy and regular bearer. It is of great value in pollinizing.

PECANS

\$1.25 Each

DAISY—The Pecan is rapidly becoming a popular tree in California, adapting itself to practically all of our climatic conditions. The stock is grafted and 4 ft. to 6 ft. tall.

WALNUTS

\$1.25 Each—\$12.50 Dozen

EUREKA—Large oblong, soft shell, tightly sealed. Tree vigorous grower, blight resisting, good producer, blooms very late.

PLACENTIA—A favorite in Southern California. Nuts large, soft shell, white meat of excellent quality.

GRAPE VINES



California Varieties

15c Each

\$1.50 Dozen

\$8.00 per 100

BLACK MONUKKA—Berries seedless medium size, elongated; clusters large; skin thin, nearly black; flesh yellow, sweet and juicy. Early.

BLACK PRINCE (ROSE OF PERU)—Bunches very large; berries large, oval; skin thick, brownish black; flesh tender, juicy, rich and sprightly; a fine market variety. Medium.

CORNICHON—Berries very large, oblong; dark blue, almost black, covered with a beautiful bloom; skin rather thick; a good shipping grape. Late.

EMPEROR—Clusters large; berries large, oval, rose-colored; one of the most valuable grapes for shipping long distances. Does not ripen well near the coast. Late.

FLAME TOKAY—Bunches very large; berries large; skin thick, pale red, or flame colored; flesh firm, sweet; a splendid shipping grape. Medium.

MALAGA—Vine a strong grower and immensely productive; bunches very large, loose shouldered; berry very large, oval, yellowish green; skin thick fleshy. Early.

MISSION—The well-known variety cultivated at the missions by the Spanish Padres; strong sturdy grower, bearing large black berries; valuable for wine. Medium.

MUSCAT—Bunches are large, long and loose; berries large, slightly oval, pale amber when ripe; flesh firm, brittle, exceedingly sweet and rich; fine flavored. Medium.

OLIVETTE BLANCHE—The grape is large, fully two inches long, never too close; berries long, olive-shaped, greenish amber, slightly brown on side exposed to the sun, firm with a neutral flavor. Late.

RED MALAGA—Color deep red with blue bloom. Unusually delicious flavor; excellent shipping and keeping qualities. Medium.

RIBIER (GROS GUILLIAUME)—Berries extra large on medium sized bunches. Color intense blue-black. The most beautiful grape grown. Its flavor and bearing qualities are in keeping with its appearance. Medium.

THOMPSON SEEDLESS—The best known seedless grape, widely planted for raisins and market and a fine home fruit as well. Very large bunches of rather small, greenish-yellow berries, sweet and mild. Early.

ZINFANDEL—Bunches large, compact; berries round, dark purple, covered with a heavy bloom; succeeds well in most any climate. Medium.

AMERICAN VARIETIES

20c Each; \$1.75 Dozen; \$10.00 per 100

CONCORD—Undoubtedly the most widely known and popular of all American grapes. Black in color, with a bluish bloom, borne profusely in medium sized bunches. The Concord does well in California, except in the regions of extremely hot summers, and its rich flavor is just the same when grown here as in the East. August.

NIAGARA—The standard American green grape, holding the same rank among green kinds that Concord holds in the blacks. Berries large, pale-yellow, tender, sweet and juicy. August.

POSTAGE ON ANY GRAPEVINES 25c PER DOZEN EXTRA

BERRY PLANTS --- GRAPE VINES

There are few if any sections in California where one or more of the so-called small fruits or berries do not thrive well. They are especially adapted to the garden, on account of the small space occupied, and the short time in which fruit can be obtained.



STRAWBERRIES

20c Dozen
\$1.50 per 100

BLAKEMORE
—A new strawberry introduced by the U. S. Dept.

of Agriculture. A bright red color which it keeps after picking and preserving. Firm berries of large size.

CAROLINA—A berry that has met with instant favor. A vigorous grower, with strong foliage, producing heavily, berries of large size and fine flavor.

KLONDYKE—A very popular berry. A vigorous grower, berries of medium size and good favor. Recommended for shipping purposes.

MASTODON—Mammoth sized berries, round in shape, medium dark red in color. An early producer and bearing as late as Thanksgiving; the last picking being as large as the first.

PROGRESSIVE—A variety that will bear over a longer period than any other. The fruit is of fine flavor and good size.

YOUNGBERRY

15c Each; \$1.50 Dozen; \$7.50 per 100

Said to be a cross between the Loganberry and the Dewberry. An exceptionally fine flavored very productive berry. Bears early and commands the highest market prices. The fruit colors well and is exceptionally sweet and large. Color jet black. 15c each, \$1.50 dozen.

RASPBERRIES

15c Each
\$1.50 Dozen
\$7.50 per 100



CALIFORNIA SURPRISE—This is the earliest, the finest flavored, and one of the most productive raspberries for Southern California. The crop starts ripening about May first and lasts until June 15th.

BLACK CAP—Fruit medium size; color glossy black, flavor piquant and agreeable.

CUTHBERT—An old favorite; large and handsome; bears transportation well, very productive.

ST. REGIS EVERBEARING—An early variety, ripens throughout the season. Berries large and of best quality, strong grower.

LOGANBERRY

15c Each; \$1.50 Dozen; \$7.50 per 100

Supposed to be a hybrid between the Blackberry and Raspberry, but it is entirely distinct from either of its parents. When fully ripe it is a very dark red, very large, often an inch and a quarter long. The vines are rampant growers.

GOOSEBERRY

20c Each; \$2.00 Dozen

OREGON CHAMPION—Medium large, round, fine quality, productive and free from mildew.

BLACKBERRIES

15c Each
\$1.50 Dozen
\$7.50 per 100



CORY'S MAMMOTH THORNLESS
—Can be kept in bush form by pruning. Ripens early, flavor delicious, sweet, flesh firm, melting and juicy, few seeds. June and July.

CRANDALL'S EARLY—One of the earliest berries to ripen producing great quantities of large, firm, sweet berries which keep well after picking. May to July.

KOSMO—See page 5.

HIMALAYA—Wonderfully vigorous grower; fruit fairly good size, almost round, juicy and with small seeds. Bears summer and late fall.

MAMMOTH—Strong grower and heavy bearer. Berries large, highly flavored and very sweet. Ripens early and fruits over a long period.

CURRANT

20c Each; \$2.00 Dozen

PERFECTION—Good quality; bright red; flavor rich, mild and sub-acid; exceedingly productive.

DEWBERRY

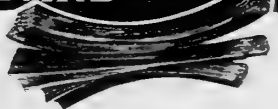
15c Each; \$1.50 Dozen

GARDENA DEWBERRY—The very earliest berry that we have, ripening two weeks before any other kind. Large, glossy black fruit of fine flavor, borne abundantly.

POSTAGE ON ANY BERRY PLANTS 10c PER DOZEN EXTRA

VEGETABLE PLANTS AND ROOTS

RHUBARB



GIANT CHERRY—Stalks of large size and excellent flavor. One of the prime favorites in Rhubarb. Large divisions. 25c each, \$2.50 dozen.

PANAMA—A variety that grows all the year round. Yields twice as much as other rhubarb and requires half the amount of sugar. It is comparatively free from acid and requires no peeling 25c each, \$2.50 dozen.

WAGNER'S GIANT—A standard variety that is well known. Grows very rapidly and is hardy in any climate. Stalks are large and have a very fine flavor. Field divisions 15c each, \$1.50 dozen.

Postage 25c per dozen extra

We have available also an assortment of the more common vegetable plants such as Tomato, Pepper, and Egg Plant. These are offered for shipping purposes only in full flats of 100 plants and are not sold in smaller quantities. This is due to the fact that when these plants are taken out of the soil and shipped they rarely arrive in good condition.

TOMATO—Earliana, New Stone, and Beefsteak varieties. \$1.50 per flat of 100 plants.

PEPPER—California Wonder, Chinese Giant, and Anaheim Chili. \$2.00 per flat of 100 plants.

EGG PLANT—New York Improved. \$2.00 per flat of 100 plants.

The above are sold only in full flats and can be shipped only via express.

ASPARAGUS



25c Doz.
\$1.75 per 100

ARGENTEUIL—Exceedingly popular. Stalks large and tender. Color white. 25c dozen, \$1.75 per 100.

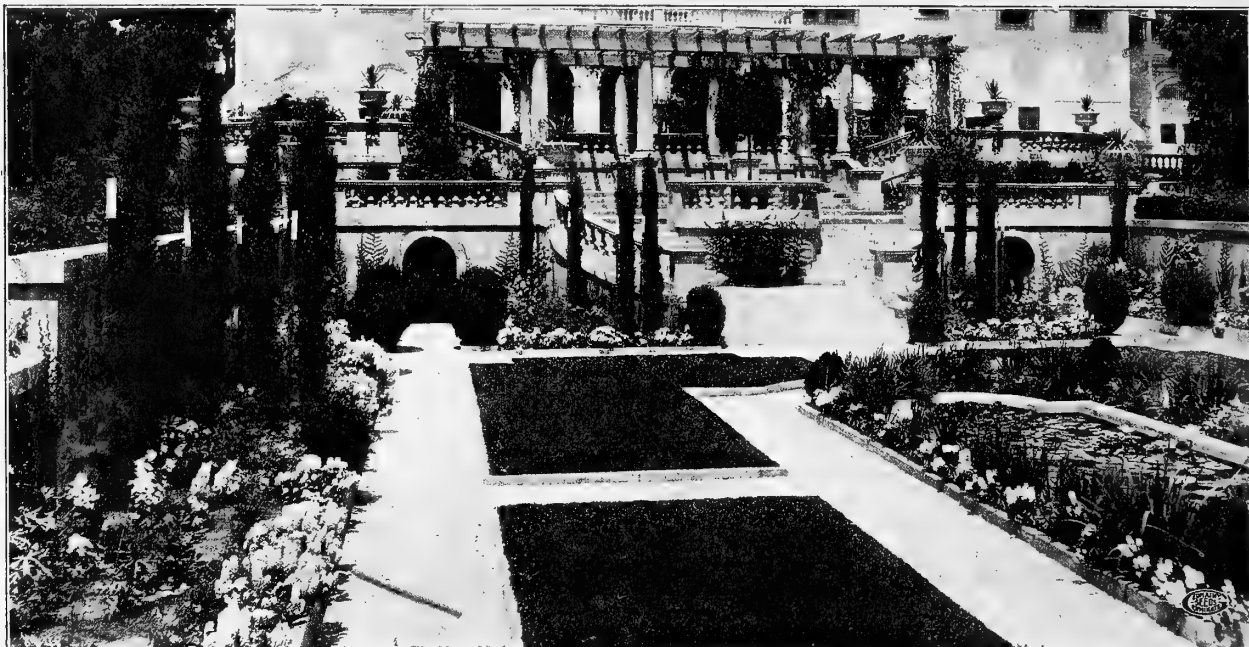
PALMETTO—Shoots are light green, tinted pink, and are very tender. 25c dozen, \$1.75 per 100.

WASHINGTON—A variety that has come to the front, grows very large and is very rust-resistant. 25c dozen, \$1.75 per 100.

Postage 10c per dozen extra

DECORATIVE PLANTS

For House, Porch and Patio



ASPARAGUS PLUMOSUS NANA—*"Asparagus Fern."* Its delicate fronds of dark green are equal to the finest fern. A great value for mixing in bouquets and easily grown. 3 in. pots 15c; \$1.50 dozen.

ASPARAGUS SPRENGERI—One of the best known hanging basket or pot asparagus ferns. Will stand either sun or shade. 3 in. pots 15c; \$1.50 dozen.

AUCUBA JAPONICA VARIEGATA—*"Gold Dust Plant."* Deep green foliage conspicuously dotted or spotted with gold. Fine pot plant in a shaded location. 3 in. pots 25c; \$2.50 dozen.

AZALEAS—See page 13.

BEGONIAS—See page 13.

BILBERGIA NUTANS—An excellent pot plant with its slender pine-apple-like leaves and pale green flowers tipped blue and surrounded with rosy bracts. 4 in. pots 50c.

BUXUS—*"Boxwood."* See page 14.

CAMELLIA—See page 12.

CLIVIA MINATA—A very showy flower belonging to the lily family. Its clusters of orange flowers of from eight to twenty are quite unusual in color. Does well in pots or in the garden. \$1.50 to \$5.00.

COLEUS—We have made a specialty of Coleus for some time. Our collection carries quite a range of varieties. 3 in. pots 15c; \$1.50 per dozen.

DAPHNE—See page 12.

EUPHORBIA SPLENDENS—*"Crown of Thorns."* Low growing spreading spiny tender plant that blooms almost continuously in favored sections. Bright red flowers of much interest. 3 in. pots 25c; \$2.50 dozen.

FARFUGIUM GRANDE—*"Leopard Plant."* One of the best ornamental pot plants. Its large circular leaves thickly spotted with creamy yellow give it a very distinctive appearance. 5 in. pots 50c.

FATSIA JAPONICA—See page 15.

Nothing can quite take the place of ferns for indoor decoration. Outside they have a place, too, which is the shady corner or under trees.

CRYPTOMIUM ROCKFORDIANUM—*"Holly Fern."* A marvelous fern for either outside or inside. Its holly-like foliage makes it extremely useful. 3 in. pots 25c; 4 in. pots 50c.

NEPHROLEPSIS EXALTATA BOSTONENSIS—*"Boston Fern."* A general favorite too well known to warrant a description. 5 in. pots 75c; 6 in. pots \$1.00.

NEPHROLEPSIS WHITMANI—*"Double Feather Boston Fern."* An improved variety of much merit. Very feathery in appearance. 5 in. pots 75c; 6 in. pots \$1.25.

PTERIS TREMULA—A large quick growing fern suitable for either pot or outdoor growing. 6 in. pots 75c.

WOODWARDIA RADICANS—One of the best of the tall growing outdoor ferns. 1 gallon 35c; 5 gallon \$1.00.

HEDERA HELIX—*"English Ivy."* See vines.

KENTIA FORSTERIANA—By far the most satisfactory indoor palm. 4 in. pots 50c; 6 in. pots \$1.50.

MONSTERA DELICIOSA—Of the bread fruit family. Particularly interesting because of the natural holes in the unusually large serrated leaves. \$1.50 to \$3.00 each.

PHOENIX ROEBELINI—A very dainty type of palm that makes a very satisfactory pot specimen. 5 in. pots \$1.50.

POINSETTIA PULCHERRIMA—The well known "Christmas" flower. 4 in. pots 25c.

RHODODENDRON—See page 13.

SANSEVIERIA LAURENTI—An excellent house plant. The thick leathery leaves stand heat and dust very well. This variegated form margined with gold is very attractive. 4 in. pots 75c; 5 in. pots \$1.25.

STRELITZIA REGINA—See page 12.



KENTIA PALM

VINES



AMPELOPSIS VEITCHI—“*Boston Ivy*.” Clinging vine, changing from green in summer to red and yellows in fall. Gallon 35c.

ANTIGONON LEPTOPUS—“*Rosa de Montana*.” Rapid climber with large leaves covered with pink blossoms. Gallon 60c, 5-gallon size \$1.50.

BIGNONIA CHERERE—“*Red Trumpet Vine*.” Evergreen climber with long, tubular, blood-red flowers, yellow at the base. Gallon 50c.

BIGNONIA TWEEDIANA—“*Yellow Trumpet Vine*.” Slender green leaves and canary yellow trumpet-shaped flowers. Gallon 35c.

BIGNONIA VENUSTA—“*Orange Trumpet Vine*.” Vivid orange flowers, in great masses. Gallon 50c.

BIGNONIA VIOLACEA—“*Violet Trumpet Vine*.” Vivid orange flowers, in great masses. Gallon 50c.

BOUGAINVILLEA BRAZILIENSIS—Showy plant with brilliant reddish purple flowers and bright green foliage. Gallon 50c.

BOUGAINVILLEA CRIMSON LAKE—The most beautiful of the bougainvilleas. Large and brilliant crimson flowers. Gallon 75c, 5-gallon size \$2.00, boxed plants, 5 to 6 feet, \$4.00.

CLEMATIS PANICULATA—Vigorous climber used for covering porches, fences, etc. Fragrant white flowers in large quantities. Gallon 35c.

FICUS PUMILA—“*Creeping Fig*.” Miniature leaves clinging to anything, such as stone, brick, wood, etc. Gallon 50c.

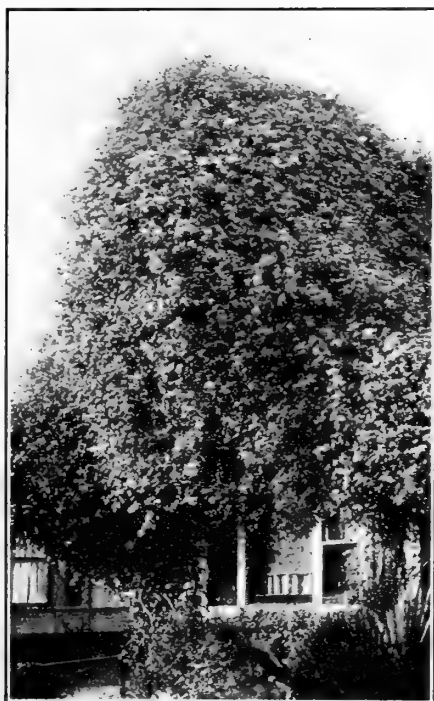
FICUS REPENS—“*Creeping Fig*.” Same as above with larger leaves. Gallon 35c.

FICUS REPENS SILVER MARGINED—“*Creeping Fig*.” Same as Repens, but with edged white leaves. (New.) Gallon 50c.

GELSEMIUM SEMPERVIRENS—“*Carolina Jasmine*.” Graceful vine, good foliage, myriads of clear yellow flowers. Gallon 50c.

HEDERA HELIX—“*English Ivy*.” Evergreen climber, dark, glossy leaves, excellent for covering banks, walls, trunks of old trees, etc. 3-in. pots 15c, gallon size 35c.

HEDERA HELIX MADERIENSIS—New large variegated-leaved English Ivy. Leaves beautifully blotched with light and dark green and creamy yellow. Gallon 35c.



BOUGAINVILLEA

HOYA CARNOSA—“*Wax Plant*.” Evergreen twining plant with thick shiny oblong leaves and small star-shaped pink and white flowers of waxy texture. 4-inch pots 35c.

JASMINUM GRANDIFLORA—“*Catalina Jasmine*.” Hardy and vigorous. Very fragrant. Used in the finest perfumes. Gallon 50c.

JASMINUM PRIMULINUM—Slender, green branches and glossy green leaves. Primrose yellow flowers. Gallon 35c.

LANTANA SELLOWIANA—“*Trailing Lantana*.” For sunny banks and walls. Masses of lavender flowers. Gallon 35c.

LONICERA HALLEANA—“*Hall's Japanese Honeysuckle*.” Delightfully fragrant white flowers changing to yellow. Gallon 35c.

RHYNCHOSPERMUM JASMINOIDES—“*Star Jasmine*.” Marvelously perfumed vine from the Malay Peninsula with large leathery and glossy leaves together with myriads of little star-shaped white flowers. Gallon 50c.

SOLANUM RANTONETTI—“*Potato Vine*.” Same as above with violet flowers. Gallon 35c, 5-gallon size \$1.00.

TECOMA AUSTRALIS—Rapid grower. Dense, glossy green foliage. Covered with small cream-colored flowers. Gallon 35c.

TECOMA MACKENII—Large bright pink, trumpet-shaped flowers. Gallon 35c.

WISTARIA PURPLE—Long racemes of purple colored pea-shaped flowers that almost cover the plant. 5-gallon size \$1.50.

WISTARIA PINK—Pink flowers. 5-gallon size \$1.50.

WISTARIA WHITE—White flowers. 5-gallon size \$1.50.

GERMAIN'S CALIFORNIA GROWN

plants of unusual vigor and color have been shipped to all parts of the world. We are proud of the part we have played in this interesting work and feel that our offerings for 1934 are another step forward in the horticultural world. While this list covers the more popular demand we are in a position to supply many varieties and sizes not listed. We invite your inquiry and trust we can be of service to you.



CAMELLIAS

No other plant offers more exquisite waxy flowers of so much character and with such a range of color as the camellia. Even their foliage carries the waxed effect and is of an interesting dark green. We offer five selected varieties of this easily grown plant. Their only cultural requirement being a well drained soil and a partially shaded position.

PINK PERFECTION—The most popular camellia grown in California. Dainty shell pink flowers so perfectly formed as to suggest they all came from a single mold. An early winter bloomer of exceptional merit and vigor.

CHEERFUL—Bright cherry red in color, very double, perfect in form and early flowering.

PURITY—As pure white as its name would indicate. Flowers of large size perfectly double and a very heavy flowering variety.

DAI KAGURA—One of the best of the variegated forms. Its dark pink and white markings so cleverly distributed as to make every flower differ in actual makeup. Flowers of good size.

LADY CAMPBELL—Another red differing in tone and texture from Cheerful to be very worthy of a place in any garden.

Any of the five varieties in 4 in. pots 40c each. The five for \$1.75. 6 in. pots \$1.50 each. The five for \$6.50.

DAPHNE

A plant enjoying much the same cultural requirements as the camellia. Much of its popularity is due to the intense fragrance of the flowers. Low growing and in most cases growing as wide as it does tall, it should be in every garden. We offer only the variegated form, foliage gold margined, light pink flowers. 4 in. pots 75c, 6 in. pots \$1.50.

PERENNIALS

Many of the perennials we grow are listed in our general catalog to which we suggest you refer in making your selections. We do wish to call your attention to a few items of unusual interest that we feel we are producing in exceptional types and colors.

DELPHINIUM

From our many trials of delphinium we selected a strain that produced such marvelous flowers on such strong tall spikes that a description of them sounds almost unbelievable. Spikes five to six feet tall of large flowers in every conceivable shade of blue and some verging into the most beautiful pink imaginable. We feel fortunate in being able to offer this strain to our plant loving public. 4 in. pots 25c each; \$2.50 per dozen. Field clumps during the dormant season only 35c each; \$3.50 per dozen.

GERBERA HYBRIDS

The Transvaal Daisy is enjoying more popularity each year. New types and colors resulting in larger flowers and more definite colors have been produced in recent years. We feel fortunate in being able to offer what we consider the best in these marvelous flowers. When planting be certain the crown is one-half to one inch above ground. 1 year field clumps 35c each, \$3.50 per dozen; 2 year field clumps 50c each, \$5.00 per dozen.

TRITOMA HYBRIDS

The color cut in the back of our general catalog no doubt displays this marvelous plant better than any word description. We feel that there is room in every garden for this choice variety. Blooming divisions 30c each, 4 for \$1.00, \$2.75 per dozen, postpaid.

GARDENIAS

One of milady's favorites. Man's too for that matter. Very fragrant and its white flowers fitting for all occasions. Makes a handsome plant because of its glossy green foliage. Plant in a mixture of peat and soil in a well drained location. 4 in. pots 35c each, 6 in. pots 75c each.

BOUGAINVILLEA

CRIMSON LAKE—The showiest vine grown in all of California with its startling crimson bracts completely covering the plants. While it is tender to frost it deserves a place in every garden where cold does not prevail. 1-gallon containers 75c each, 4 in. pots 50c each.

ILEX CORNUTA

A splendid new Holly of Chinese origin. Found native in a section very similar in climatic conditions to our own. Rapid growing, of a very dark green foliage, providing a good background for the interesting red berries. Grows in sun or partial shade, making a handsome shrub. 1-gallon containers 50c each.

STRELITZIA REGINA

Rivaling the birds of the tropics from whence it obtained its name of Bird of Paradise this strangely shaped intense orange and blue flower compels the admiration of all who see it. 4 in. pots \$1.50 each, 6 in. pots \$2.50 each.



STRELITZIA REGINA

GERMAIN'S CALIFORNIA GROWN

plants are descendants of plants whose native habitats are some of the most remote corners of the world. Careful field selection by our experienced staff at our various trial grounds keeps the material at a very high standard and assures the purchaser plants that have been tried and proven. We would particularly like to have you visit our trial ground at the nursery at Van Nuys where you will find interesting material at all times of the year.

AZALEAS

One of the most colorful groups of plants grown in California. Semi-shade lovers thriving best in a well-drained soil with a generous peat content and planted among ferns and their kindred they are a worthy asset to California gardens.

EVERGREEN GROUP

AMOENA—Superb and semi-double, claret red.

HENODIGERI—Bright cherry red.

MACRANTHA—Deep salmon red.

MAXWELLI—Carmine red.

DECIDUOUS GROUP

MOLLIS—Shades of yellow and orange.

PONTICA—Fragrant soft yellow.

RHODODENDRONS

Anyone who has ever seen a bed of Rhododendrons in bloom can well appreciate their glorious qualities. The plantings in Golden Gate Park in San Francisco are visited literally by the tens of thousands yearly just to feast their eyes on their wondrous and exquisite beauty. Rhododendrons do well most anywhere if planted in a partially shaded location, and are not tender. They will stand a very appreciable amount of cold. The plants offered are all well branched and nursery grown and should not be confused with wild varieties. Special planting instructions are enclosed with each order.

GERMAIN'S SPECIAL DE LUXE

Collection No. 10

1 HYBRID SEEDLING—8-12 in. Splendid color, bushy plant.

1 PONTICUM—8-12 in. Lilac specie of Europe.

2 for \$1.00

Delivered Free Anywhere on the Pacific Coast

GERMAIN'S SPECIAL DE LUXE

Collection No. 6

1 PEARL OF KENMORE—6-12 in. Pink.

2 PONTICUM—8-12 in. Lilac.

1 CATAWBIENSE—8-12 in. Pink to purple.

4 for \$1.75

Delivered Free Anywhere on the Pacific Coast

RHODODENDRONS

GERMAIN'S SPECIAL DE LUXE

Collection No. 5

4 SELECT HYBRIDS—8-12 in. Mixed. A selection of brilliant colors from our choicest new hybrid Rhododendrons, ideal for garden and landscape.

4 for \$2.45

Delivered Free Anywhere on the Pacific Coast

GERMAIN'S SPECIAL DE LUXE

Collection No. 7

1 OLEIFOLIUM—6-8 in. Pink, free flowering.

1 METTERNICHII—4-6 in. Pink, compact grower.

1 FERUGINEUM—3-4 in. Fiery red, good for rocky.

1 LUTESCENS—6-8 in. Yellow flower, very pretty foliage.

1 FORTUNEI—6-8 in. Beautiful. Blush pink, fragrant flower.

1 18234 No Name—5-6 in. Pink, leaves very large and broad.

1 18144 No Name—4-6 in. Violet flower, dwarf, bushy growth.

7 for \$5.50

Delivered Free Anywhere on the Pacific Coast

BEGONIAS

Have long been one of the most desirable of bedding plants where shade predominates. Their colors are particularly attractive and their foliage provides a pleasing contrast with other material requiring the same culture.

LUMINOSA—Dainty red flowers on plants growing about one foot high. 3 in. pots 10c, \$1.00 per dozen.

PRIMA DONNA—Same type with flowers of an attractive pink shade. 3 in. pots 10c, \$1.00 per dozen.

CARMEN—New pink flowered variety with marvelous bronze leaves. A remarkable addition to the bedding group. 3 in. pots 15c, \$1.50 per dozen.

LUCERNE—Tall growing variety with large clusters of beautiful pink flowers. 3 in. pots 25c, 6 in. pots 75c.

FUCHSIA

Add Fuchsias to your list of plants that will thrive in full shade and give you a generous amount of color. We offer a selected group of desirable varieties.

BLACK PRINCE—Single pink.

HENRY HENKEL—Light pink.

MAMMOTH—Rich violet shade.

SWANLEY YELLOW—Distinct orange red.

OTTO—Dark purple.

DOUBLE WHITE.

HIBISCUS

One of the most colorful group of plants grown in California with its vivid flowers and bright glossy foliage. Tender to frost but usually starting from the base again and flowering that year.

AGNES GAULT—The finest of all. Immense single coral pink flowers. Always in flower.

PEACHBLOW—A pleasing shade of light pink.

SINGLE RED—The brightest colored and most profuse bloomer of all.

DOUBLE PINK—Marvelous double pink.

DOUBLE RED—Rich double red.

All varieties 35c in 1-gallon containers, \$1.00 in 5-gallon containers.

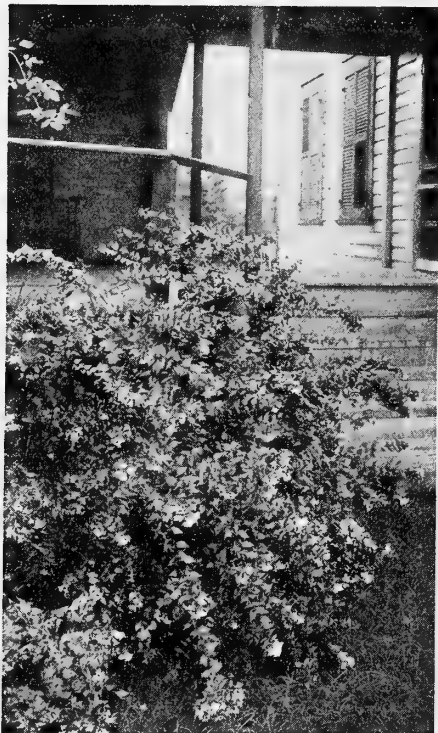
HYDRANGEA

Another group of shade plants that contribute a great deal of color during their flowering season. We offer the improved French varieties. 4 in. pots 35c, 6 in. pots 75c.

CANTUA BUXIFOLIA

A flower that is very hard to describe. Certainly a lovely sight when in flower with its clusters of drooping crimson trumpet shaped flowers. Should be grown in partial shade. 4 in. pots 35c.

EVERGREEN SHRUBS



ABELIA GRANDIFLORA

ABELIA GRANDIFLORA—Small, shiny, bronzy-green foliage covered with clusters of small fragrant pinkish white flowers. Gallon 35c, 4-5 ft. size \$1.00.

ABUTILON—“*Flowering Maple*.” An open growing shrub with bell shaped orange red flowers and maple shaped leaves. 1 gallon size 35c.

ARBUTUS UNEDO—“*Strawberry Tree*.” Bushy and spreading, foliage similar to California Holly. Pearl white flowers followed by clusters of brilliant red strawberry-like fruit. Gallon 35c, 5-gallon size \$1.00.

ASCLEPIAS TUBEROSA—“*Butterfly Weed*.” A drought resistant lusty perennial with showy orange red flower heads of much interest. 1 gallon 35c.

AZALEAS—See page 13.

AZARA MICROPHYLLA—A graceful drooping shrub with quite small leaves that make it quite useful for leaf contrast among other shrubs. 1 gallon 60c.

BELOPERONE TOMENTOSA—A tender soft wooded shrub carrying long reddish brown bracts enclosing white and purple flowers of much interest. 4 in. pots 20c, 1 gallon containers 35c.

BERBERIS DARWINI—“*Darwin's Barberry*.” Holly-like leaves, small and glossy, turning red in winter. Orange flowers followed by purple berries. Gallon 35c, 5-gallon size \$1.00.

BERBERIS WILSONI—“*Wilson's Barberry*.” Small, gray-green foliage turning to reddish bronze in fall. Golden yellow flowers followed by Salmon-red berries. Gallon size 35c.

BROOM—(See Genista, Spartium, Cytisus).

BUDDLEIA ASIATICA—“*Butterfly Bush*.” Silvery green foliage bearing in winter many slender spikes of very fragrant white flowers. Gallon 35c.

BUDDLEIA HEDGEWEGIA—Improved type of Magnifica bearing much larger and fuller lavender purple flowers. Gallon 35c.

BUDDLEIA VARIABILIS VEITCHI—Rich green foliage, large, purple flowers. Strong grower. Gallon 35c.

BUXUS JAPONICA—“*Japanese Boxwood*.” Low, dense growth, small and glossy green foliage. Pyramid shape, 28-in. \$2.00 30-in. \$2.50, 32-in. \$3.00, 34-in. \$3.50, 36-in. \$4.00. Globe shape, 22-in. \$2.50, 24-in. \$3.00, 26-in. \$3.50, 28-in. \$4.00, 30-in. \$4.50.

BUXUS SEMPERVIRENS—“*English Boxwood*.” Slower growing than the Japanese Boxwood. Very much darker in foliage especially valuable for hedge work. (Specimens same price as Buxus Japonica.) 4 in. pots 25c.

CALLISTEMON LANCEOLATA—Lance-like green leaves and bottle brush shaped brilliant red flowers. Medium size. Gallon 35c.

CALLISTEMON RIGIDUS—“*Bottle Brush*.” Long, red anthers forming a flower similar in shape to a bottle brush. Gallon 35c, 5-gallon size \$1.00.

CARISSA GRANDIFLORA—“*Natal Plum*.” Dense and dark glossy, green foliage. Waxy white flowers, fragrant, followed by red cranberry-like edible berries. Gallon 35c.

CASSIA ARTEMESOIDES—Finely cut silvery gray foliage and yellow fragrant flowers. Gallon 35c, 5-gallon size \$1.00.

CASSIA TOMENTOSA—A rapid growing large shrub bearing great clusters of yellow flowers. 1 gallon 35c, 5-gallon \$1.25.

CEANOTHUS ARBOREUS—“*California Lilac*.” Large two-toned leaves, dark green above, silvery color underneath. Large trusses of light blue fragrant flowers. Gallon 35c.

CEANOTHUS CYANEUS—“*California Lilac*.” Small, glossy green foliage. Dark blue flowers, very fragrant. Gallon size 35c, 5-gallon size \$1.50.

CEANOTHUS THYRSIFLORUS—“*California Lilac*.” Fast-growing, small, dark green foliage, pale blue sweetly scented flowers. Gallon 35c.

CESTRUM AURANTIACUM—“*Orange Cestrum*.” Tall and slender, bearing quantities of tubular orange flowers in loose clusters. Gallon 35c.

CESTRUM PARQUI—“*Night-Blooming Jasmine*.” Medium sized shrub, yellowish green leaves and stems, with clusters of cream-colored flowers, intensely fragrant, only at night. Gallon 35c.

CHOISYA TERNATA—“*Mexican Orange*.” Glossy deep green foliage and fragrant white flowers, resembling orange blossoms. Gallon 35c, 5-gallon size \$1.00.

CHORIZEMA ILICIFOLIA—Low growing, holly-like foliage and orange-red pea-shaped flowers. Gallon 35c.

CISTUS LADINIFERUS—“*Rock Rose*.” Covered with pure white flowers having golden stamens in the center. Gallon 35c.

COPROSMA BAUERI—“*Varnish Plant*.” Low growing, round waxy leaves, glossy as though varnished. Gallon 35c.

CORONILLA GLAUCA—Gray-green foliage and pea-shaped golden yellow flowers, intensely fragrant. Gallon 35c.

COTONEASTER FRANCHETTI—Medium sized leaves, dark green on top, silvery underneath. Bright orange-red berries in profusion. Gallon 35c, 5-gallon size \$1.00.

COTONEASTER HARROVIANA—Hanging, graceful branches, bluish green leaves with clusters of flesh-pink flowers followed by holly-red berries. Gallon 35c, 5-gallon size \$1.00.

COTONEASTER PANNOSA—“*Silverleaf*.” Soft gray-green leaves, silvery underneath. White flowers followed by great masses of red berries. Gallon 35c, 5-gallon size \$1.00.

COTONEASTER PARNEYI—A new cotoneaster from China. Large clusters of brilliant red berries. Very striking. Gallon size 35c, 5-gallon size \$1.00.

COTONEASTER PROSTRATA—One of the better of the prostrate dwarf types. Evergreen in most sections. 1 gallon 35c, 5-gallon \$1.25.

COTONEASTER SALICIFOLIA—“*Willowleaf*.” Fast growing and spreading with dark green leaves, white flowers, followed by red berries. Gallon 35c.

CRATAEGUS—(See Pyracantha).

CYTISUS—(See also Genista, Spartium).

CYTISUS CANARIENSIS—“*Broom*.” Small leaved foliage covered with bright golden yellow flowers. Gallon 35c.

CYTISUS STENOPETALA—“*Broom*.” Fast and strong grower, the largest of the Brooms, bearing abundantly, bright yellow flowers. Gallon 35c.



COCOS PLUMOSUS

EVERGREEN SHRUBS



HAKEA SUAVEOLENS

DAHLIA EXCELSA—"Tree Dahlia." Semi-woody perennial growing to 12 ft. tall with great clusters of large rosy pink anemone-like flowers in the fall of the year. 1 gallon 35c, 5-gallon \$1.25.

DAPHNE—See page 12.

DIOSMA ALBA—"Breath of Heaven." Dwarf and bushy with feather-like foliage, very fragrant. Small white, star-shaped flowers. Gallon 35c.

DIOSMA PULCHRUM—"Pink Breath of Heaven." One of the daintiest of plants introduced in recent years. 1 gallon 75c.

DOMBEYA WALLICHI—While the heart shaped foliage is of unusual interest one must admit that the large pendulous clusters of pink flowers are the most amazing part of this plant. 1 gallon 50c.

DURANTA PLUMIERI—"Golden Dewdrop." Glossy, green leaves with long racemes of light blue flowers followed by yellow berries. Gallon 35c.

ELEAGNUS PUNGENS—"Oleaster." Shrub of medium height usually growing with more width than height. Leaves covered with a peculiar scale-like coating of gold. 1 gallon 35c.

ELEAGNUS PUNGENS VARIEGATA—A variegated form of the above. 1 gallon 35c.

ERICA MEDITERRANEA—"Heather." Compact and bushy with stiff stems and purple pink flowers. Gallon 35c, 5-gallon size \$1.00.

ERICA MELANTHERA—"Heather." Most popular heather. Covered from November to March with small rosy lavender flowers. Gallon size 35c, balled plants, 2 to 2½ ft. \$1.50.

ESCALLONIA LANGLEYENSIS—Dense clusters of light pink flowers. Foliage green and glossy. Gallon 35c.

ESCALLONIA MONTEVIDENSIS—Fast growing, producing in summer large snow-white flowers in great profusion. Gallon size 35c.

ESCALLONIA ROSEA—Much the same type as the rest with bright green foliage and pink flowers. Gallon 35c.

ESCALLONIA RUBRA—Dense and compact with large, shining, dark green leaves and deep red tubular flowers. Gallon 35c.

EUGENIA HOOKERI—Large, dark green leaves, reddish tipped, and cream-colored flowers followed by edible violet colored berries. Gallon 35c, 5-gal. size \$1.00.

EUGENIA MYRTIFOLIA—"Brush Cherry." Glossy green leaves, reddish on the new growth with flowers and berries same as above. Gallon 35c, 5-gallon size \$1.00.

EUONYMUS JAPONICA—Foliage deep glossy green throughout. Compact and can be trimmed into various shapes. Gallon 35c.

EUONYMUS JAPONICA AUREA VARIEGATA—Leaves bright golden yellow in center with dark green edges. Gallon 35c.

EUONYMUS PULCHELLUM—(Small Leaved Euonymus). A very desirable subject for border or low hedge work. Foliage is very good green and always of good texture. 3-in. pots 15c, 1 gallon 35c.

FATSIA JAPONICA—"Aralia." Massive plant of tropical appearance with very large shiny green leaves deeply lobed. For shady place. Gallon size 35c, 5-gallon size \$1.00.

FEIJOA SELLOWIANA—"Pineapple Guava." Tall shrubs with glossy green leaves and bluish-white flowers. Fruit egg size, combining the flavors of pineapple, raspberry and banana. Excellent eaten fresh or for preserves, jellies, salads, etc. Gallon-can size 35c.

FREMONTIA MEXICANA—One of the finest and most beautiful of flowering shrubs. Actually is a small tree with small fig-like grayish green leaves. The plants break out in late winter and spring with a gorgeous profusion of exquisite flowers two to three inches across of a deep orange-yellow streaked with crimson. A rapid grower and a quick bloomer. Gallon size 50c, 5-gallon size \$1.75.

FUCHSIAS—See page 13.

GARDENIA—See page 12.

GENISTA CANARIENSIS—Tall, erect-growing variety with pea-shaped yellow flowers. A gallon 35c.

GENISTA FRAGRANS—"Sweet Broom." Small grass-green leaves and absolutely covered when in bloom with pea-shaped yellow flowers. Gallon 35c, 5-gallon size \$1.00. (See also Spartium, Cytisus.)

GREVILLEA BANKSI—Large shrub with dense fern-like foliage and comb-like flowers of a rich deep crimson. Gallon 50c.

GREVILLEA THELMANNIANA—Small, finely cut foliage and many dense racemes of scarlet flowers. Gallon 35c, 5-gallon size \$1.00.

GREWIA OCCIDENTALIS—A large spreading shrub of easy growth. Its rosy-lavender flowers tucked away like stars in the foliage give it an interesting appearance. 1 gallon 35c.

HAKEA LAURINA—Large tall shrub, with leaves like a Eucalyptus. Flowers form large red balls with protruding stamens. Gallon 35c.

HAKEA SUAVEOLENS—Rounded bush with needle-like leaves. Small white, fragrant flowers. Tall. Gallon 35c, 5-gallon size \$1.00.

HARDENBERGIA LILACEA—Excellent half-climbing shrub, with large beautiful foliage and spikes of deep blue flowers. Gallon 35c.

HIBISCUS—See page 13.

HIBISCUS SYRIACUS—See deciduous list.

HUNNEMANNIA FUMARIAE-FOLIA—A shrubby plant of the poppy family. Foliage a blue gray, flowers a bright lemon yellow. 4-in. pots 25c, 1-gallon containers 50c.

HYPERICUM CALYGINUM—A marvelous ground cover. The root-stocks form a perfect mat underground making an excellent retainer in hillside work. 1 gallon 35c.

HYPERICUM MOSERIANUM—"Gold Flower." Low, spreading shrub bearing beautiful large and flat golden yellow flowers. Gallon 35c.

HYDRANGEA—See page 13.

ILEX AQUIFOLIUM—"English Holly." The well-known prickly and glossy foliage with the red berries. Gallon 35c.

ILEX CORNUTA—See page 12.

JASMINUM REVOLUTUM—"Italian Jasmine." Shrub or semi-climber with golden yellow flowers. Gallon 35c.

LAGUNARIA PATTERSONI—Gray-green foliage and large pink holly-hock-like flowers. Gallon 35c.



EUGENIA MYRTIFOLIA

EVERGREEN SHRUBS



NANDINA DOMESTICA

LANTANA—Useful flowering shrub for hedges, fences and specimens. *Dwarf Cream*—Gallon containers 35c. *Dwarf Orange* — Gallon containers 35c.

Dwarf Pink—Gallon containers 35c. *Dwarf Radiation* (Orange red)—Gallon containers 35c. *Dwarf Lemon Yellow* — Gallon containers 35c.

LAURUS CERASUS—“*English Laurel*.” Marvelous specimen shrub with its thick glossy dark green foliage and well shaped growth. 1 gallon 35c, 5-gallon \$1.50.

LAVENDULA VERA — “*Lavender*.” The old-fashioned Sweet Lavender. Soft gray foliage and fragrant lavender flowers. Gallon 35c.

LEONOTIS LEONORUS — “*Lion’s Tail*.” Rapid growing shrubby plant with heads of brilliant orange flowers. 1 gallon 35c.

LEPTOSPERMUM CHAPMANI — A medium sized shrub with very small foliage and pinkish white flowers. Appearing in midwinter or early spring. 1 gallon 35c.

LEPTOSPERMUM LAEVIGATUM — “*Australian Tea Tree*.” Large and spreading with grayish green foliage and a profusion of small white flowers. Gallon 35c; 5-gallon size \$1.00.

LEUCOPHYLLUM TEXANUM—An interesting shrub with silvery gray foliage and rosy purple flowers that is quite drought resistant. 1 gallon 50c.

LIGUSTRUM CILIATUM—“*Privet*.” Smaller growing than most privets, with large flower spikes and dense, heavy green foliage. Gallon 35c, 5-gallon size \$1.00.

LIGUSTRUM JAPONICA—“*Japanese Privet*.” Leathery, dark, glossy leaves and white flowers. Gallon 35c, flats of 100 plants \$1.25.

LIGUSTRUM NEPALENSE—“*Nepal Privet*.” Large glossy green leaves, graceful habit. Gallon 35c, flats of 100 plants \$1.25.

LIGUSTRUM OVALIFOLIUM AU-REUM — The well-known Golden Privet so common in Southern California. Gallon 35c, flats of 100 plants \$1.25.

LIPPIA CITRIODORA — “*Lemon Verbena*.” Fast-growing with delightfully fragrant foliage. Flowers white, in spikes. Gallon 35c.

LOQUAT—Used extensively for its fruit and also as an ornamental evergreen. One of the earliest fruits in the spring and makes a fine jelly. Gallon cans 35c, 5-gallon size \$1.00.

MAHONIA AQUIFOLIUM—“*Oregon Grape*.” Dark spiny foliage and yellow flowers in dense clusters followed by purple berries. Gallon size 35c, 5-gallon size \$1.00.

MELALEUCA DECUSSATA—“*Blue Bottle Brush*.” Small bluish green leaves and lavender flowers. Gallon 35c.

MELALEUCA HYPERICIFOLIA — “*Red Bottle Brush*.” Medium size leaves, with large orange-scarlet flowers like bottle brushes. Gallon 35c, 5-gallon size \$1.00.

MELALEUCA NESOPHILA—Large and bushy and rosy-lavender globe-shaped flowers at the branch ends. Gallon 35c, 5-gallon size \$1.00.

MYRTUS COMMUNIS — “*Roman Myrtle*.” Shiny green foliage, highly aromatic, with many small white flowers followed by black berries. Gallon 35c, 5-gallon size \$1.00.

MYRTUS COMMUNIS COMPACTA — “*Dwarf Myrtle*.” Dense and compact with small, dark shiny leaves. Low growing. Gallon cans 35c.

NANDINA DOMESTICA—“*Heavenly Bamboo*.” Rich red leaves when young, dark green later, beautiful coppery tones in winter, red berries in the fall. Gallon 35c, 5-gallon size \$1.00.

NERIUM — “*Oleander*.” Brilliant, showy flowers and light green foliage.

Atropeniissima—Dark Blood Red—Gallon 35c, 5-gallon size \$1.00.

Mrs. Roeding—Double Salmon—Gallon 35c, 5-gallon size \$1.00.

Single White—Gallon 35c, 5-gallon size \$1.00.

Double Pink—Gallon 35c, 5-gallon size \$1.00.

NERIUM — “*Oleander*.” STANDARDS OR TREE FORM.

Pink, Red or White, 3-4 ft. \$2.00.

Pink, Red or White, 4-5 ft. \$3.00

Pink, Red or White, 5-6 ft. \$4.00.

OSMANTHUS AQUIFOLIUM — “*False Holly*.” Large shrub with very dark green sharp spiny leaves much like the English Holly. Suitable for specimens of hedges. Should be pruned often to keep thick and compact. 1 gallon 50c.

OSMANTHUS FRAGRANS — “*Oleo Fragrans*.” Very fragrant small white or yellow flowers on a very attractive medium size shrub. Should be grown in shade. 1 gallon 50c.

PHOTINIA ARBUTIFOLIA—“*California Holly*.” Well known California shrub of which the red berries are sold so much at Christmas. Large bush with large clusters of handsome red berries. Gallon 50c, 5-gallon size \$1.50.

PHOTINIA SERRULATA—“*California Holly*.” Shiny oblong leaves which turn a vivid red in fall. Large clusters of small white flowers. Gallon size 35c, 5-gallon size \$1.25.

PITTIOSPORUM CRASSIFOLIUM—Tall, vigorous and fast growing, with dense gray-green foliage. Fine on sea coast. Gallon size 35c, 5-gallon size \$1.00.

PITTIOSPORUM EUGENOIDES — Large and glossy light green foliage. Fine for hedge or specimens. Gallon 35c.

PITTIOSPORUM RHOMBIFOLIUM —Symmetrical and pyramidal shape, clean foliage and clusters of white fragrant flowers followed by orange-yellow berries. Tall. Gallon 35c.

PITTIOSPORUM TENUIFOLIUM (NIGRICANS)—Similar to Eugenoides in growth with smaller, darker green leaves. Gallon 35c.

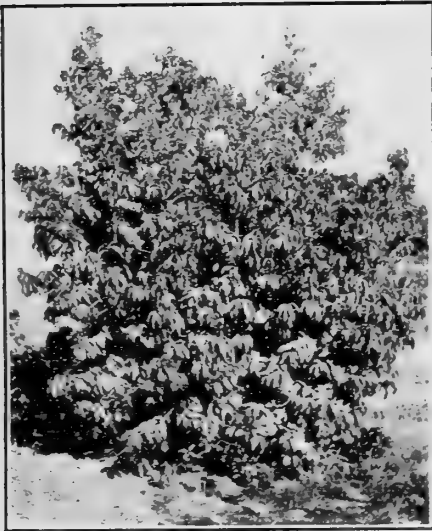
PITTIOSPORUM TOBIRA — “*Japanese*.” Round-headed shrub with deep, glossy green foliage and small fragrant orange-blossom-like flowers. Gallon 35c, 5-gallon size \$1.00.

PITTIOSPORUM UNDULATUM — Deep, glossy green leaves and yellowish fragrant flowers. Tall. Gallon 35c, 5-gallon size \$1.00.



NERIUM—OLEANDER

EVERGREEN SHRUBS



PRUNUS INTEGRIFOLIA

PLEROMA SPLENDENS—"Queen Flower." Flower a royal purple, perhaps the most intense purple in all the plant groups. Foliage a gray green of much interest. 1 gallon 35c.

PLUMBAGO CAPENSIS—Semi-climbing shrub covered for a long period with azure blue flowers. Gallon 35c, 5-gallon size \$1.00.

POLYGALA DALMAISIANA—Continuously blooming shrub. Magenta-pink flowers tipped with white. Low and bushy. Gallon 35c.

PRUNUS CAROLINIANA—"Carolina Cherry." A quick growing large shrub or small tree that is very useful in general planting. 1 gallon 35c.

PRUNUS ILLICIFOLIA—"Wild Cherry." Beautiful and glossy holly-like leaves. Native of California. Tall. Gallon 50c.

PRUNUS INTEGRIFOLIA—"Catalina Cherry." Large and glossy, dark green foliage, holly-like in form. Native of Catalina Island. Gallon 35c.

PSIDIUM CATTLEIANUM—"Guava." Used both as ornamental plants, for fresh fruit, and for jelly making.

"Strawberry Guava." Glossy leaves and strawberry-like fruit. Gallon 35c.

"Yellow Strawberry Guava." Foliage similar to the strawberry guava with fruit about the same size, yellowish green in color. Gallon 35c.

PUNICA GRANATUM NANA—"Dwarf Evergreen Pomegranate." Miniature pomegranate with fresh green foliage, bright scarlet flowers followed by small crimson fruit. Gallon 35c.

PYRACANTHA (CRATAEGUS)—"Evergreen Hawthorn."

PYRACANTHA CRENULATA—Long, narrow leaves, glossy and dark green with bright crimson berries. Gallon 35c, 5-gallon size \$1.00.

PYRACANTHA FORMOSIANA—Compact growth small, bright green leaves and berries of brightest Christmas red in enormous clusters. Gallon 35c.

PYRACANTHA KANSUENSIS—(New), Small, glossy green leaves with profusion of small bright colored fruits that remain on the plant throughout the winter months. Gallon size 50c, 5-gallon size \$1.50.

PYRACANTHA LALANDI—"Burn-ing Bush." Rich glossy green foliage with clusters of white flowers in the spring followed by a wealth of orange berries. Gallon 35c, 5-gallon size \$1.00.

PYRACANTHA YUNNANENSIS—Similar in form to Pyracantha Crenulata with larger leaves and more vigorous growth and great masses of red berries that remain on the plant for several months in a magnificent display of color. Gallon 35c, 5-gallon size \$1.00.

RAPHIOLEPIS OVATA—"Japanese Hawthorn." Blunt, thick leaves with a mass of pink flower clusters in spring. Spicy fragrance. Keep for weeks after cutting. Purple berries in fall. Gallon size 35c, 5-gallon size \$1.00.

RHAMNUS CALIFORNICA—A native shrub that has a place in every planting where drought material is needed. 1 gallon 50c.

RHODOENDRONS—See page 13.

RHUS INTEGRIFOLIA (Sumac)—"Lemonade Berry." Native of California, with deep green foliage and small pinkish white flowers followed by dark red fruits. Tall. Gallon 35c.

RHUS OVATA—Compact growth, broad, lustrous green foliage, light yellow flowers, followed by dark red fruits. Gallon 50c.

ROMNEYA COULTERI—"Matilija Poppy." A large semi wood plant with silvery gray foliage and very large crumpled white flowers with a tasseled yellow center. Requires a sunny position. 1 gallon 50c.

ROSEMARINUS—"Rosemary." Narrow dark green leaves, silvery underneath, highly aromatic and used for seasoning. Gallon 35c.

RUELLIA MACRANTHA—A very showy lavender flowered shrub. Almost continuously in flower. Hardy down to about 25 degrees. Does best in partial shade. 1 gallon 50c.

SALVIA LEUCANTHA—"Purple Salvia." A very popular plant because of its ease in growing. Should be pruned to the ground after its blooming period. 1 gallon 35c.

SOLANUM RANTONETTI—See vines.

SOLLYA HETEROPHYLLA—"Australian Bluebell." Trailing shrub with slender twining stems for covering banks, fences, etc. Brilliant small blue, bell-shaped flowers. Gallon 35c.

SPARTIUM—"Spanish Broom." Strong and fast-growing with slender almost leafless branches. Large, pea-shaped yellow flowers, sweetly scented. Gallon 35c, 5-gallon size \$1.00. (See also Genista, Cytisus.)

STATICE PEREZI—A plant that blooms almost continuously with its rich blue and white flowers carried well above the thick leathery leaves. 1 gallon 35c.

STRELITZIA REGINA—See page 12.

STREPTOSOLON JAMESONI—An attractive sub shrub of much interest because of the attractive orange yellow flowers. 1 gallon 35c.

TEUCRIUM FRUTICANS (German-der)—A small bushy shrub with light gray foliage and pale blue flowers. Another plant needing very little attention. 1 gallon 35c.

TECOMA CAPENSIS—"Cape Hon-ey-suckle." Shrub or half climber. Thick, bright green foliage and bright red trumpet-shaped flowers. Gallon 35c, 5-gallon size \$1.00.

VERONICA DECUSSATA—Dwarf, rounded leaves. Large, deep blue flowers. Medium size shrub. Gallon 35c.

VERONICA IMPERIALIS—Low and bushy, dark green leaves and reddish purple flowers. Gallon 35c.

VIBURNUM SUSPENSUM—Spreading and bushy, angled branches and large leaves, shiny and dark green. Flower clusters of white, tinged with pink. Gallon size 35c, 5-gallon size \$1.00.

VIBURNUM TINUS—"Laurustinus." Medium-sized very dark green foliage and large, flat clusters of flesh-colored blooms with a peculiar fragrance. Gallon 35c.



SPARTIUM—SPANISH BROOM

BROAD-LEAVED EVERGREEN TREES



EUCALYPTUS FICIFOLIA

ACACIA BAILEYANA—Fern-like, silvery blue-green foliage. Completely covered in the spring with great sprays of lemon-yellow flowers. Gallon size 35c, 5-gallon size \$1.00.

ACACIA CULTRIFORMIS—“*Knife-Leaved*.” Dwarf growing with small bluish leaves and yellow flowers. Gallon 35c.

ACACIA DEALBATA—“*Silver Wattle*.” Large and spreading with fern-like bluish green foliage and golden yellow flowers. Gallon 35c, 5-gallon size \$1.00.

ACACIA FLORIBUNDA—“*Ever-blooming Acacia*.” Fast-growing and upright with long, narrow leaves and creamy yellow flowers. Gallon 35c, 5-gallon size \$1.00.

ACACIA LATIFOLIA—“*Long-Leaved Acacia*.” Spreading and bushy with dense foliage and yellow flowers. Gallon 35c, 5-gallon \$1.00.

ACACIA MELANOXYLON—“*Black Acacia*.” Popular street tree. Does well at coast or in the interior. Light lemon-yellow flowers. Gallon 35c, 5-gallon \$1.00.

BAUHINIA PURPUREA—“*Orchid Tree*.” Medium-sized tree with two-lobed leaves and beautiful showy flowers 3 inches or more across, varying from deep pink to purple in color. Gallon 75c, 5-gallon size \$1.75.

CAMPHORA—“*Camphor Tree*.” Dense, bright green, glossy foliage tinged with bronze in the spring. Popular street tree. Gallon 35c, 5-gallon \$1.00.

CASUARINA STRICTA—“*Beefwood or She-Oak*.” Hardy street tree that withstands alkali, drought, heat or cold. Bunchy, reed-like foliage resembling a pine. Gallon 35c.

CERATONIA—“*Carob Tree or St. John's Bread*.” Most popular Southern California street tree. Symmetrical shape and dense, glossy, evergreen foliage. Gallon 35c, 5-gallon \$1.00.

EUCALYPTUS FICIFOLIA—“*Scarlet Flowering*.” Large and dark glossy green leaves with great clusters of brilliant crimson flowers. Gallon 35c, 5-gallon size \$1.00.

EUCALYPTUS GLOBULUS—“*Blue Gum*.” The most widely planted for windbreaks and fuel. Gallon 35c, 5-gallon size \$1.00.

EUCALYPTUS GLOBULUS COMPACTA—“*Bushy Blue Gum*.” Low growing, very bushy and densely branched, forming an almost round head. Gallon 35c.

EUCALYPTUS POLYANTHEMUS—Medium-sized and spreading tree with round leaves. Thrives in Arizona and California. Resistant to heat, cold and drought. Gallon 35c.

EUCALYPTUS ROBUSTA—“*Swamp Mahogany*.” Tall growing, similar to Ficifolia variety, but with creamy white flowers. Gallon size 35c.

EUCALYPTUS ROSTRATA—“*Red Gum*.” Rapid grower and very hardy. Popular for windbreaks, etc. Gallon 35c.

EUCALYPTUS FICIFOLIA

“*The Scarlet Eucalyptus*”

One of the most attractive street, shade, or specimen trees for Southern California. Various streets in Beverly Hills are planted to this variety and when in bloom it is one of the most glorious sights imaginable. The tree bears immense clusters of large and brilliant scarlet flowers against a background of dark, glossy green leaves. Does best near the coast.

Gallon size—35c

5 Gallon size—\$1.00

EUCALYPTUS RUDIS—“*Desert Gum*.” Vigorous, rapid grower, round leaves when young, lance-shaped when mature. Gallon 35c.

EUCALYPTUS SIDEROXYLON ROSEA—“*Red Ironbark*.” Very hardy, of medium size having masses of delicate pink flowers and long, narrow silver-gray leaves. Gallon 35c.

EUCALYPTUS TERETICORNIS—“*Gray Gum*.” An excellent variety thriving in both coast and desert. Withstands extremes of heat and cold to a marked degree. Gallon 35c, 5-gallon size \$1.00.

EUCALYPTUS VIMINALIS—“*Manna Gum*.” Long, pendulous, narrow leaves, and chalky white trunk. Very hardy. Stands more frost than Blue Gum. Gallon 35c.

GREVILLEA ROBUSTA—“*Silk Oak*.” Fern-like foliage, and covered in summer with comb-like yellow flowers. Gallon 35c, 5-gallon size \$1.00.

JACARANDA MIMOSAEFOLIA—Round symmetrical head of light green, fern-like foliage and a mass of light violet-blue flowers in spring. Gallon 35c, 5-gallon size \$1.00.

MAGNOLIA GRANDIFLORA—“*Southern Magnolia*.” Dark green, heavy and glossy foliage and large pearl-white, intensely fragrant flowers measuring 6 to 8 inches across. Gallon 35c, 5-gallon size \$1.00.

QUERCUS AGRIFOLIA—“*California Live-Oak*.” Evergreen with spiny-toothed leaves making a large, dense, handsome tree. Gallon 35c, 5-gallon size \$1.00.

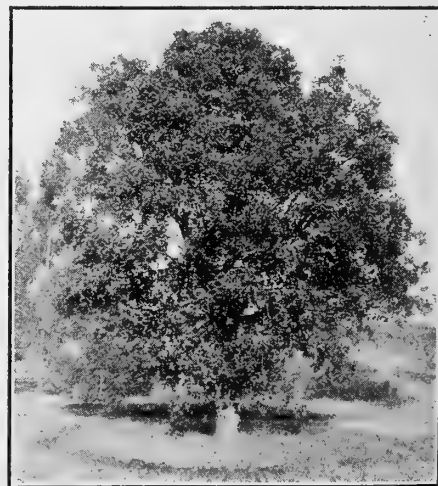
QUERCUS SUBER—“*Cork Oak*.” Similar to “*Live-Oak*” in foliage. Source of cork which is derived from its bark. Gallon size 50c, 5-gallon size \$1.75.

SCHINUS MOLLE—“*California Pepper*.” Beautiful, unique and popular. Grows anywhere in Southern California with little care. Gallon 35c, 5-gallon size \$1.00.

STERCULIA DIVERSIFOLIA—“*Bottle Tree*.” Narrow, tapering trunk, bright green foliage. Excellent for narrow parkways. Gallon size 35c, 5-gallon size \$1.00.

ULMUS PARVIFLORA—“*Evergreen Elm*.” A beautiful Elm bringing the beauty of this tree in an evergreen form. Small leaves and slender drooping branches giving the effect of a Weeping Willow. A magnificent lawn specimen. Gallon size 60c, 5-gallon size \$1.75.

UMBELLULARIA—“*California Laurel or Bay*.” Slow growing with long, narrow, dark green leaves, very pungent when crushed. Medium size. A handsome tree. Gallon size 35c, 5-gallon size \$1.00.



QUERCUS SUBER

DECIDUOUS SHADE TREES

ACER DASYCARPUM—"Silver Maple." The best Maple for the Pacific Coast, making a beautiful fast growing shade tree. 6-8 feet 75c.

ALBIZZIA JULIBRISSIN—"Silk Tree or Pink Acacia." Feathery pink blossoms on trees with acacia-like foliage. Gallon 50c.

BETULA ALBA—"White Birch." A slender, graceful tree with picturesque white bark. Very popular. 6 to 8 ft. 75c, 8 to 10 ft. \$1.00.

BETULA ALBA LACINIATA—"Cutleaf Weeping Birch." A beautiful tree with snow white trunk and deeply cut leaves. 6-8 ft. \$1.00.

CATALPA SPECIOSA—"Western Catalpa." A very hardy open tree suitable for all regions. Large leaves and great trusses of white spotted flowers in the spring. 8-10 ft. 75c.

FRAXINUS VELUTINA—"Arizona Ash." Rapid growing, fine for Arizona and California. 8 to 10 ft. 75c.

GINKGO BILOBA—"Maidenhair Tree." A disease resistant tree. The leaves turn a brilliant yellow in the fall. 4 to 6 ft. 75c.

LIQUIDAMBAR STYRACIFLUA—"Sweet Gum." A tree that takes on the most striking fall coloring of any in California. Can also be grown in the interior. 4 to 6 ft. 75c.

MELIA AZEDARACH UMBRACULIFORMIS—"Texas Umbrella." A desert favorite yet thriving on the coastal region. A splendid shade tree with a symmetrically rounded crown. 4 to 6 ft. 85c.

PLATANUS ORIENTALIS—"European Sycamore." Rapid grower with bright green maple-like foliage. An excellent tree under most all conditions. 6 to 8 ft. 75c, 8 to 10 ft. \$1.00.

PLATANUS RACEMOSUS—"California Sycamore." Native of the California foothills. Spreading and heavily branched, with soft green foliage. 6 to 8 ft. 75c, 8 to 10 ft. \$1.00.

POPULUS NIGRICA—"Lombardy Poplar." Tall, slender, and narrow, used for driveways etc. Rapid grower. 8 to 10 ft. 50c, 10 to 12 ft. 75c.

ROBINIA PSEUDACACIA—"Black Locust." A rapid growing hardy drought resistant tree much used in the arid and desert section. 8 to 10 ft. 75c.

SALIX BABYLONICA—"Weeping Willow." The well-known willow with its hanging branches and large spreading top. 6 to 8 ft. 75c.

TEA'S WEEPING MULBERRY—A graceful and beautiful tree, the branches at a height of about eight feet curving clear to the ground, forming a dense umbrella-like head. Can be trained horizontally to grow over a frame-work. Grafted stock, bare root, one year heads. \$2.00.

ULMUS PUMILA—"Chinese Elm." Fast growing and stands extremes of heat, cold, drought and alkali. Very popular. 6 to 8 ft. 50c, 8 to 10 ft. 75c.

FLOWERING DECIDUOUS TREES

CERCIS CANADENSIS—"Redbud." A very handsome small tree with distinct foliage and abundant showy flowers of a deep pink color in the early spring. 3-4 ft. 60c.

PRUNUS BLIRIEANA—"Flowering Plum." A lovely soft pink double variety borne on long slender branches. Foliage heavily tinged with orange. 4-5 ft. \$1.00.

PRUNUS PISSARDI—"Purple Leaved Plum." Flowers white tinted pink. Quite a contrast with the purple leaves in early spring. 4-5 ft. \$1.00.

CRATAEGUS OXYCANTHA SPLENDENS—"Paul's Double Scarlet Thorn." One of the most popular of all the Hawthornes. Flowers double and red followed by red berries. 6-8 ft. \$1.25.

PRUNUS MUME—"Flowering Apricot." Variety Dawn. Earlier than the Flowering Peach with flowers fully double. 4-5 ft. \$1.00.

PRUNUS PERSICA—"Flowering Peach." The flowering peach has enjoyed more popularity than any of the flowering deciduous trees. No doubt deservedly. We offer the following selected varieties.

PRUNUS PSEUDO-CERASUS FLORE PLENO—"Japanese Flowering Cherry." Long a favorite in old Japan and worthy of any garden here. A beautiful sight when in full bloom.

PYRUS—"Flowering Crab Apple." The flowering crab is one of the showiest of our spring flowering trees. We list the following three varieties.

Aldenhamensis (new)—Leaves purple, flowers maroon. 3-4 ft. 85c.

lonensis Bechtelii—"Bechtel's Double Flowering Crab." Small trees completely covered with large double delicate pink flowers. 3-4 ft. 75c.

Floribunda—Bright pink buds, white flowers. 3-4 ft. 75c.

Burbank—Large double pink flowers. Late.

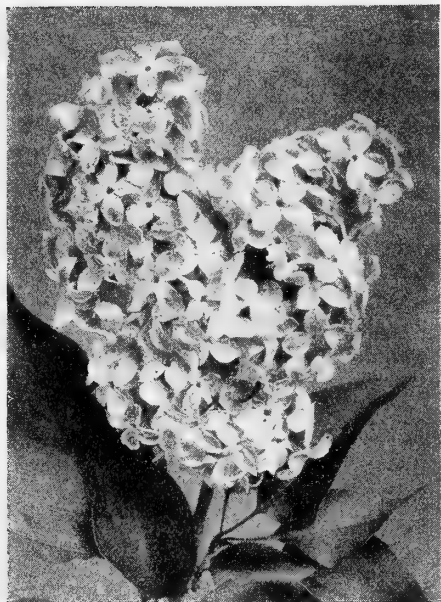
Camelliaflore—Double carmine red. Late.

Double White—Large flowered.

Peppermint Stick—Variegated. **San Jose Pink**—Double pink. Early.

All varieties 4-5 ft. \$1.00

DECIDUOUS SHRUBS



LILAC (SYRINGA)

AMYGDALUS ALBA NANA—*"Dwarf White Flowering Almond."* Double white button-like flowers displayed the full length of the willowy stem make this a very desirable garden subject. 1½ to 2 ft. \$1.00.

AMYGDALUS ROSEA NANA—*"Dwarf Pink Flowering Almond."* Same in type as the white only a beautiful soft shade of pink. 1½ to 2 ft. \$1.00.

AZALEA (Deciduous varieties). See page 13.

LILAC (SYRINGA)

The well-known Eastern Lilac in named varieties.

**In 5-gallon containers
\$1.00**

Berryer

Single flower of violet mauve.

Hippolite Maringer

Fine large double flowers, purple mauve in color.

Leon Gambetta

Double flowers of lilac pink.

Michael Buchner

Double flowers of a beautiful pale lilac shade.

President Viger

Bluish lilac flowers, double in form.

CYDONIA JAPONICA—*"Flowering Quince."* A very showy group of plants flowering in the early spring and carrying a good glossy foliage the rest of the season. Blood red, 2 ft. \$1.25. Corollina Salmon red, 1½ ft. \$1.50.

HIBISCUS SYRIACUS—*"Althea."* Another old fashioned shrub much in demand. 1 gallon 35c.

KERRIA JAPONICA—*"Japanese Rose."* Semi-deciduous shrub bearing small double rose-like yellow flowers. Should be planted in partial shade. 1 gallon 40c.

LAGERSTROEMEA INDICA—*"Crepe Myrtle."* Tall growing shrub bearing an abundance of pink crepe-like flowers in spring and summer. 5-gallon size \$1.00, gallon can size 35c.

MAGNOLIA SOULANGEANA

"Saucer Magnolia"

Unquestionably one of the most attractive of flowering trees. Not very commonly used in Southern California as yet but is becoming more and more popular as the prices are lowered. One of the most beautiful of all spring flowering shrubs or small trees.

This beautiful Chinese Magnolia is a glorious sight in late winter and spring, when the large rosy-pink flowers bloom forth over the entire tree before the appearance of the bright green leaves. They continue to bloom for a long period and there will be flowers on older plants, along with the new leaves. The trees are of slow growth, but small plants will bear many blossoms. Older specimens reach a height of 15 to 20 feet.

Prices:

2 to 3 feet—\$2.50
3 to 4 feet—\$4.00
4 to 5 feet—\$7.00

PUNICA—*"Flowering Pomegranate."* Double red. Fast growing with large double-red flowers borne in great profusion and scarlet in color. Very showy. Gallon size 35c, 5-gallon size \$1.00.

PUNICA MME. LEGRELLE—Same as above with flowers light red touched with creamy yellow. Gallon 35c, 5-gallon size \$1.00.

SPIREA ANTHONY WATERER—*"Red Bridal Wreath."* Dwarf growing with dense panicles of rosy crimson flowers. Gallon 35c.

VIBURNUM CARLESI

This recently introduced plant from Korea is one of the finest ornamentals ever brought in from Asia, and it should be a great favorite in American gardens for it will grow in almost any situation, losing its leaves in cold climates and being half evergreen in California. Dwarf and bushy, with grayish-green foliage, producing in early spring many heads of delicate coral pink blooms which become pearl white as they open and possess a most intense and exquisite fragrance.

1½ to 2 feet—\$1.50

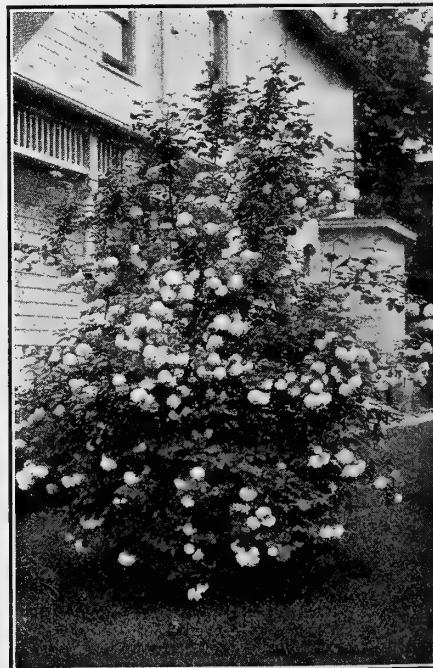
SPIREA VAN HOUTTEI—*"Bridal Wreath."* The well-known and ever popular Eastern shrub. Pure white flowers. Gallon containers 35c.

TAMARIX HISPIDA—Cypress-like foliage. Small pink flowers completely covering plant. Gallon 35c.

VIBURNUM OPULUS STERILIS—*"Eastern Snowball."* Large ball shaped clusters of white flowers. Gallon size 35c.

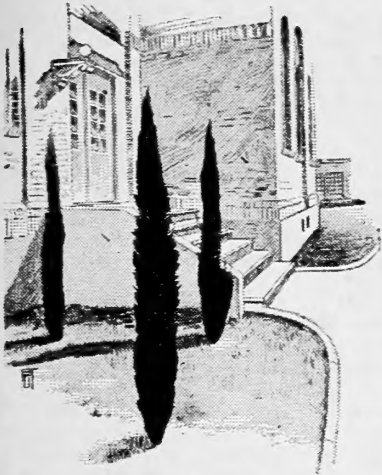
WEIGELIA EVA RATHKE—Brilliant crimson flowers in clusters. Gallon size 35c.

WEIGELIA ROSEA—Large clusters of rose-pink flowers, trumpet shaped, making a very effective display. Gallon size 35c, 3 to 4 ft. \$1.00.



VIBURNUM OPULUS STERILIS

CONIFEROUS EVERGREEN TREES



ITALIAN CYPRESS

ARAUCARIA BIDWILLI—“*Bunya-Bunya Tree*.” Sharp-pointed leaves, grows into a perfect pyramid. Gallon size 35c.

CEDRUS DEODARA—Rapid growing Cedar, used for lawn or parkways. Towering pyramidal form. Gallon size 35c.

CUPRESSUS ARIZONICA—“*Arizona Cypress*.” Bluish green, narrow pyramidal form. Good for hot, dry sections. Gallon size 35c, 5-gallon size \$1.25.

CUPRESSUS MACROCARPA—“*Monterey Cypress*.” Widely planted for hedge, shade trees, and wind-breaks. Gallon size 35c, 5-gallon size \$1.25.

CUPRESSUS SEMPERVIRENS—“*Italian Cypress*.” Tall, slender, and erect. Used for gateway, arches, tall borders, etc. 6 to 8-foot size \$1.75, 5 to 6-foot \$1.50, gallon 35c.

JUNIPERUS CHINENSIS PFITZERIA—“*Pfitzer's Juniper*.” Bushy, wide-spread, horizontal branches. Forms immense flat irregular head of bluish green foliage. Gallon 35c, 2 to 3-foot size \$1.75.

JUNIPERUS SABINA TAMARISCIFOLIA—Creeping type juniper seldom more than one foot high but reaching a spread of 6 to 8 feet. Gallon size 35c, balled \$1.50.

LIBOCEDRUS DECURRENS—“*Incense Cedar*.” Tall, narrow, pyramidal tree with deep, green lustrous foliage. 2 to 3 feet \$1.75.

PINUS CANARIENSIS—“*Canary Island Pine*.” Fast growing with extremely long needles in large tufts. New growth silvery white. Gallon 35c, 5-gallon size \$1.00.

PINUS COULTERI—“*Pitch Pine*.” A good specimen pine of compact form with dark green foliage. 1 gallon 35c, 5-gallon \$1.00.

PINUS HALAPENSIS—“*Aleppo Pine*.” Rapid growing, excellent for hillsides and for quick effect. Gallon 35c, 5-gallon size \$1.00.

PINUS INSIGNIS—“*Monterey Pine*.” Native California. Bright green foliage and bushy habit. Fastest growing pine. Gallon 35c, 5-gallon size \$1.00.

PINUS PINEA—“*Italian Stone Pine*.” Picturesque Italian native with broad umbrella shape. Gallon 35c.

PODOCARPUS ELONGATUS—An exceptionally ornamental tree with yew-like dark green foliage. 1-gallon containers 50c.

SEQUOIA SEMPERVIRENS—“*Coast Redwood*.” The well-known California Redwood, excellent for street, parkway, garden. Gallon 35c, 5-gallon size \$1.00.

THUYA BEVERLYENSIS—“*Golden Column Arbor-vitae*.” Narrow column of golden green foliage, excellent for specimens. Sizes 3 to 4 ft. \$1.50, 4 to 5 ft. \$2.00, 5 to 6 ft. \$2.50, 6 to 7 ft. \$3.00.

THUYA ORIENTALIS AUREA NANA—“*Berckman's Golden Arbor-vitae*.” Dwarf habit, compact and symmetrical, almost globular. Bright golden tint. Balled plants 12 to 18 inches \$1.00, 24-inch \$1.25.

THUYA ORIENTALIS PYRAMIDALIS—“*Chinese Arbor-vitae*.” Tall growing evergreen, dense foliage, bright green at all times. Balled plants 2 to 3 ft. \$1.50.

PALMS, GRASSES, Etc.

COCOS PLUMOSUS—“*Queen Palm*.” Very popular; topped with a plume-like crown of feathery, graceful leaves. Gallon 35c. Also available in field grown heavy balled plants. 3 to 4 ft. \$1.50, 4 to 5 ft. \$2.00, 5 to 6 ft. \$3.00.

CORTADERIA ARGENTEUM—“*Pampas Grass*.” Forms a large clump of grass-like leaves topped by great silvery white plumes. Gallon 35c.

CYPERUS PAPYRUS—“*Egyptian Paper Plant*.” Tall and graceful aquatic plant. Feathery tufts of leaves on tall reed-like green stalks. Gallon 35c.

MUSA ENSETE—“*Abyssinian Banana*.” Clumps of tall slender trunks with very large heavy foliage. The popular ornamental banana. Gallon 35c, 5-gallon size \$1.75.

PHOENIX CANARIENSIS—“*Date Palm*.” Most popular palm in Southern California. Immense crown of curving leaves, dark green, stately and rapid grower. Gallon 35c, balled plants 3 to 4 ft. \$1.00.

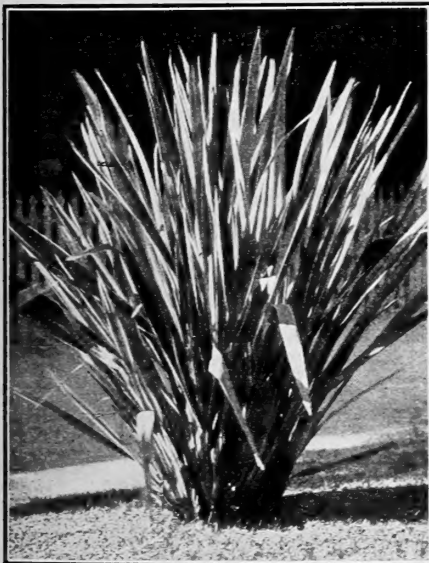
PHOENIX ROEBELINI—Beautiful dwarf palm, grows only about 3 feet with slender trunk and arching head of bright green fronds. Somewhat tender. 6 in. pots 75c.

PHORMIUM TENAX, VARIEGATED—“*New Zealand Flax*.” Strong clump of long stiff-pointed leaves, variegated. Gallon 35c, 5-gallon size \$1.50.

WASHINGTONIA FILIFERA—“*California Fan Palm*.” Tall, stout trunks with large fan-shaped leaves, dark green. Balled plants, 2 to 2½ ft. \$1.50.

WASHINGTONIA ROBUSTA—Very much like the above, but grows taller, with a more slender trunk. Balled plants, 2 to 2½ ft. \$1.50.

YUCCA PENDULA GLAUCA—Evergreen with long narrow spiny pointed leaves, gracefully recurved. Gallon 35c, balled plants, 2 ft. \$1.75.



PHORMIUM TENAX



LILY POOL AND BANANA TREE

SEEDS of SHRUBS and TREES

The collection of shrubs and trees described on this page contains only varieties of recognized ornamental value for garden or street planting, which can be successfully grown from seed.

It must be remembered, however, that hard wooded perennials germinate and develop more slowly than most herbaceous plants; but, if cared for over the required period, they are no harder to grow than annual flowers or vegetable plants.

Sow tree seeds at the latter part of winter or in spring, preferably in seed boxes of light, well-drained soil; covering the seed about its own depth or a little deeper. Press the soil firm with the hand after sowing and keep boxes in a lath house, frame, or some sheltered place, watering regularly and carefully. When seedlings are large enough to handle, pot or transplant to other boxes and grow on until large enough to set out in the open.

Acacia and other hard seeds should be soaked in hot water for 12 hours before planting.

Germination of certain varieties is slow and irregular, therefore seed boxes must be given good care over a protracted period as seedlings often continue to appear for several weeks and in some cases several months.

PRICE: All varieties of tree seeds offered on this page are 15c per packet.

ACACIA

4425 **BAILEYANA**—A strikingly beautiful tree reaching a height of thirty feet. Foliage silvery gray, pinnate and glaucous; bearing bright canary yellow flowers in great profusion during winter. Oz. \$1.00.

4426 **CULTRIFORMIS**—“*Knife Leaved Acacia.*” Oz. 75c.

4427 **DEALBATA**—“*Silver Wattle.*” Finely cut foliage. Yellow flowers in late winter. Oz. 60c.

4428 **DECURRENS**—“*Green or Black Wattle.*” Good tree for avenues. Oz. 60c.

4429 **FLORIBUNDA**—“*Everblooming Acacia.*” Quick growing, pendulous habits, the bright yellow flowers appearing at all seasons of the year. Oz. 60c.

4431 **LATIFOLIA** — “*Longifolia.*” Oz. 60c.

4434 **MELANOXYLON** — “*Blackwood Acacia.*” One of the most rapid in growth of all the Acacias. Compact and pyramidal in growth; creamy yellow flowers, widely used as a parkway tree. Oz. 60c.

4437 **PODALYRIAEOFOLIA** — A shrub flowering early in winter. Oz. \$1.00.

4439 **SALIGNA** — “*Willow-leaved Acacia.*” Oz. 75c.

4441 **VERTICILLATA**—Fine for lawns and groups. Oz. \$1.00.

ARBUTUS

4448 **ARBUTUS UNEDO**—“*Strawberry Shrub.*” Foliage dark green, bears flowers and strawberry-like fruit in fall. Oz. 75c.

BUXUS

4454 **BUXUS SEMPERVIRENS**—“*Evergreen Box.*” Oz. 45c.

CALLISTEMON

4456 **CALLISTEMON RIGIDUS**—“*Bottle Brush.*” Oz. \$1.50.

CAMPHORA

4459 **CAMPHORA OFFICINALIS**—“*Camphor Tree.*” Symmetrical street tree or for lawns. Oz. 35c.

CASSIA

4463 **ARTEMISIOIDES** — Very attractive on account of its finely cut silvery gray foliage, forming a bush of lace-like appearance. Flowers sweetly scented. Very hardy and drought resistant. Oz. \$1.00.

4465 **NAIROBENSIS**—Of low spreading habit, having large rich green foliage and immense trusses of large orange-yellow flowers. Oz. \$1.00.

4469 **GRANDIFLORA FLORIBUNDA**—Spreading shrub, bright yellow flowers. Oz. \$2.25.

4470 **TOMENTOSA** — “*Wooly Senna.*” Bright yellow flowers in winter. Oz. 75c.

CASUARINA

4464 **EQUISETIFOLIA** — “*Beefwood.*” Needlelike leaves, good street tree. Oz. \$1.00.

4466 **STRICTA**—“*She Oak.*” Attaining a height of about 75 feet. It forms a very handsome tree and is particularly valuable for planting along roadsides. Oz. \$1.00.

CATALPA

4468 **CATALPA SPECIOSA** — “*Indian Bean Tree.*” Oz. 75c.

CERATONIA

4473 **CERATONIA SILIQUA** — “*St. John's Bread or Carob.*” A densely growing full crowned tree. Foliage dark green, leathery and slightly crinkly, bearing edible seed pods. Makes a handsome tree as a single specimen and is well adapted for narrow parkways. Oz. 40c.

CEDRUS

4472 **CEDRUS DEODORA**—“*Himalayan Cedar.*” A tall and handsome tree of pyramidal growth. Decidedly the best of all the cedars for California conditions, where it has been adapted as the outdoor Christmas tree. Silvery green, branches slightly drooping. Oz. 75c.

COPROSMA

4474 **COPROSMA BAUERI**—“*Looking-glass or Varnish Bush.*” Handsome low shrub, the leaves are almost round, of a clean, glossy green color and have the appearance of having been varnished. Oz. \$1.50.

COTONEASTER

4475 **FRANCHETI** — Orange berries. Tall growing. Oz. \$1.25.

4480 **HORIZONTALIS**—Low spreading. Red berries. Oz. \$1.00.

4476 **PANNOSA**—Tall leaves deep green, silver beneath. Berries vermilion red. Oz. \$1.25.

CRATAEGUS

4477 **CRATAEGUS YUNNANENSIS**—Oz. \$1.25.

4478 **CRATAEGUS PYRACANTHA**—Dark green with orange red berries in winter. Oz. 90c.

CRYPTOMERIA

4479 **CRYPTOMERIA JAPONICA**—“*Japan Cedar.*” Oz. 75c.

CUPRESSUS

4481 **ARIZONICA**—“*Blue Cypress.*” Silvery blue, stands much heat and frost. Oz. 60c.

4484 **MACROCARPA** — “*Monterey Cypress.*” A splendid tree of very rapid growth. Widely planted and of unquestioned merit for hedges and windbreaks. Planted singly it makes a beautiful specimen that becomes very picturesque in old age. Oz. 50c.

4486 **SEMPERVIRENS** — “*Italian Cypress.*” Tall and tapering, for formal effect. Oz. 60c.

CYDONIA

4487 **CYDONIA JAPONICA**—“*Japanese Quince.*” Oz. \$1.10.

DRACAENA

2902 **DRACAENA AUSTRALIS**—Slender stems surmounted by dense tuft of long strap-like leaves. Oz. 75c.

2903 **DRACAENA INDIVISA**—Leaves narrower than above. Oz. 75c.

EUCALYPTUS

4596 **CORYNOCALYX**—“*Sugar Gum.*” Stands heat and drouth, but little frost. Oz. \$1.25.

4599 **FICIFOLIA**—“*Scarlet Flowering Gum.*” A valuable and justly popular tree, having large leathery leaves and brightly colored flowers varying in shades of red and scarlet. Fine as a specimen or in parkways. Oz. 75c.

4601 **GLOBULUS** — “*Tasmanian Blue Gum.*” Fast growing, succeeds best near the coast. Oz. \$1.20.

4606 **LEUCOXYLON**—“*Victorian Ironbark.*” Stands heat and cold inland or near the coast. Oz. \$1.00.

4621 **ROBUSTA**—“*Swamp Mahogany.*” Thrives in low moist land, good for wind break or street. Oz. \$1.00.

4622 **ROSTRATA**—“*Red Gum.*” Succeeds under great variety of conditions. Heat, cold, drought or moist land. Oz. 90c.

4623 **RUDIS**—“*Desert Gum.*” Will stand heat and cold; good in desert or near coast. Oz. \$1.00.

4629 **TERETICORNIS** — “*Gray Gum.*” Good for commercial use. Stands varied climates. Oz. \$1.25.

4631 **VIMINALIS** — “*Manna Gum.*” Rapid growth. Stands hot interior and high altitude. Wood less hard, works well. Oz. \$1.00.

FRAXINUS

4493 **FRAXINUS VELUTINA**—"*Arizona Ash*." Heat and drouth resistant, good shade tree for Arizona and New Mexico. Oz. 45c.

FREMTONTIA

2966 **FREMTONTIA CALIFORNICA**—"*California Slippery Elm*." A beautiful native shrub, growing from 5 to 20 feet high. The flowers are large golden yellow, two to three inches across. ¼ oz. \$1.25.

GENISTA (Broom)

4494 **CANARIENSIS** — Pretty shrub, pea-shaped yellow flowers in spring. Oz. \$1.00.

GREVILLEA

4499 **GREVILLEA ROBUSTA**—"*Silky Oak, or Australian Fern Tree*." Beautiful tree for avenues, etc., orange flowers in late spring. Oz. \$1.25.

GUAVA

4674 **GUAVA STRAWBERRY**—Handsome shrub, foliage deep green. Fruit edible. Oz. \$1.00.

4676 **GUAVA PINEAPPLE** — "*Feijoa Sellowiana*." Dark green leaves with silvery reverse. Fruit excellent for jelly. 100 seeds 60c.

HETEROMELES

4500 **HETEROMELES ARBUTIFOLIA**—"*California Holly*." Good shrub, bright colored berries at Christmas time. Oz. 35c.

JACARANDA

4503 **JACARANDA OVALIFOLIA**—"*Brazilian Jacaranda*." Feathery foliage, blue flowers in early summer. 10 pods 45c.

LAVATERA

3262 **LAVATERA ASSURGENTIFLORA** — "*California Windbreak*." Well suited for planting in beach sand. It has handsome foliage and deep rose flowers and makes a rapid growth. Oz. 75c.

LEPTOSPERMUM

4506 **LEPTOSPERMUM LAEVIGATUM**—Fast growing shrub, white flowers in spring. Oz. \$2.00.

LIBOCEDRUS

4507 **LIBOCEDRUS DECURRENS** — "*California Red Cedar*." Oz. \$1.10.

LIGUSTRUM

4508 **LIGUSTRUM JAPONICUM** — A large shrub or small tree, having large glossy dark green leaves tinged with red. An excellent hedge plant where height is needed. Oz. 35c.

4509 **LIGUSTRUM NEPALENSE**—"*Small Leaved Privet*." A favorite hedge plant, used everywhere. Rapid in growth and hardy, its small bright green leaves make a solid wall of green when trimmed. Oz. 45c.

4510 **LIGUSTRUM VULGARE**—"*Small Leaved English Privet*." Similar to Nepalense. Same uses. Oz. 35c.

MELIA

4518 **MELIA AZEDARACH UMBRACULIFORMIS**—"*Texas Umbrella Tree*." Handsome street or shade tree. Stands much heat. Oz. 30c.

MELALEUCA

4515 **ARMILLARIS** — "*Spreading Shrub*." Creamy white flowers. Oz. \$1.50.

4514 **HYPERICIFOLIA** — Tall, with rich red flowers. Oz. \$1.50.

4516 **NESOPHILA** — Gray green, spreading shrub; flowers rosy lilac. Oz. \$1.50.

METROSIDEROS

4517 **METROSIDEROS TOMENTOSA** — Handsome shrub; flowers with crimson stamens. Oz. \$3.00.

MYRTUS

4521 **MYRTUS COMMUNIS** — "*True Myrtle*." Small white, fragrant flowers. Oz. \$1.00.

NANDINA

4522 **NANDINA DOMESTICA** — Attractive dwarf shrub, foliage colors in fall. Oz. 90c.

PARKINSONIA

4523 **PARKINSONIA ACULEATA** — Thorny, drooping branches, leathery foliage, showy yellow flowers. Oz. 60c.

PINUS

4527 **CANARIENSIS** — "*Blue Pine*." One of the best for Southern California. Oz. 75c.

4528 **COULTERI** — "*Big Cone Pine*." Native of San Bernardino Mountains and succeeds well under cultivation. Oz. \$1.00.

4530 **HALAPENSIS** — "*Appo Pine*." From Western Asia. Makes a rapid growth and thrives well in California. It is of spreading habit, with yellowish-green foliage, and highly ornamental. Oz. 75c.

4529 **INSIGNIS**—"*Monterey Pine*." Very successful near the coast. Oz. \$1.00.

4539 **TORREYANA**—"*Torrey Pine*." A handsome native species of spreading habit. Oz. 90c.

PITTOSPORUM

4541 **CRASSIFOLIUM**—"*Karo*." Grey-green downy foliage, deep red flowers. Oz. \$1.25.

4542 **EUGENOIDES** — "*Tarara*." Oz. \$1.25.

4543 **NIGRICANS**—"*Tawhiwhi*." Small shiny leaves with leaf-stems almost black. Oz. \$1.25.

4547 **TOBIRA**—Dark green shiny leaves, numerous white fragrant flowers. Oz. \$1.00.

4548 **UNDULATUM**—"*Orange P.*" A small tree with large deep green leaves. Oz. \$1.00.

POMEGRANATE

4684 **POMEGRANATE** — "*Punicum Granatum*." Oz. 75c.

PRUNUS

4552 **PRUNUS ILLICIFOLIA** — "*California Cherry*." Oz. 30c.

4553 **PRUNUS INTEGRIFOLIA**—"*Catalina Cherry*." Oz. 30c.

SCHINUS

4559 **SCHINUS MOLLE**—"*Mexican Pepper Tree*." Finely cut bright green leaves, coral red berries. Oz. 35c.

SCIADOPYTIS

4561 **SCIADOPYTIS VERTICILLATA**—"*Japan Umbrella Pine*." Very ornamental. Oz. \$1.10.

SEQUOIA

4567 **GIGANTEA**—"*California Big Tree*." Oz. \$2.00.

4568 **SEMPERVIRENS**—"*California Redwood*." Oz. \$1.50.

SPARTIUM

4562 **SPARTIUM JUNCEUM**—"*Spanish Broom*." Large, pea-shaped yellow flowers in profusion; rush-like leaves. Oz. 75c.

STERCULIA

4564 **DIVERSIFOLIA** — "*Brachychiton Populneum, Australia Bottle Tree*." Oz. 60c.

THUJA

4574 **ORIENTALIS**—"*Chinese Arborvita*." Tall. Oz. 50c.

4573 **ORIENTALIS AUREA** — "*Golden Arborvita*." Oz. 75c.

4576 **ORIENTALIS NANA COMPACTA**—"*Dwarf Chinese Arborvita*." Oz. 60c.

VIBURNUM

4578 **VIBURNUM TINUS**—"*Laurus-tinus*." Oz. 30c.

**PALM SEEDS
CHAMAEROPS**

4635 **EXCELSA** — "*Hardy Fan Palm*." Oz. 40c.

4636 **HUMILIS** — "*Dwarf Fan Palm*." Oz. 30c.

COCOS

4639 **PLUMOSA**—Slender trunk, long plumed leaves; a favorite street palm. 100 seeds \$1.00.

4638 **AUSTRALIS**—"*Pindo Palm*." 100 seeds \$1.00.

ERYTHEA

4641 **ARMATA**—"*Brahea Glauca*." Blue Palm. Elegant fan palm. 100 seeds \$1.25.

4642 **EDULIS**—"*Brahea Edulis*." 100 seeds \$1.00.

PHOENIX

4649 **CANARIENSIS**. The ornamental date palm. 100 seeds 25c; 1000 seeds \$1.75.

4651 **DACTYLIFERA**—"*The Date Palm*." Fruit edible. Oz. 30c.

4652 **RECLINATA**—100 seeds 75c.

WASHINGTONIA

4659 **FILIFERA**—"*California Date Palm*." Oz. 25c.

4658 **ROBUSTA**—A robust Fan palm. Oz. 35c.

GERMAIN'S SPECIAL VALUES

Below we have listed several inexpensive collections of fruits and plants that are ideal for the home garden. An appreciable saving can be made in taking advantage of these offers, provided, of course, that they serve your needs.

Collection "A"

GERMAIN'S Home Fruit Assortment

1 Peach, Babcock	85c
1 Peach, J. H. Hale.....	50c
1 Plum, Santa Rosa	60c
1 Plum, Satsuma.....	60c
1 Apricot, Royal.....	50c

5 trees in all, regularly priced at.....\$3.05
The collection sale price.....\$2.50

Collection "B"

GERMAIN'S Small Fruit Assortment

25 Strawberries, Carolina	40c
3 Rhubarb, Panama	75c
6 Youngberries	75c
3 Grapes, Concord.....	60c
3 Grapes, Thompson Seedless.....	45c
1 Kosmo Blackberry.....	35c

41 plants regularly priced at.....\$3.30
The collection complete—sale
price

Collection "C"

GERMAIN'S Popular Perennial Assortment

3 Gerberas (Transvaal Daisy).....	75c
3 Dianthus Beatrix.....	45c
3 Scabiosa Columbaria.....	45c
3 Shasta Daisy, Gloire de Vitry....	45c

12 plants regularly sold at.....\$2.10
The collection complete at the
sale price of.....\$1.50

Collection "D"

GERMAIN'S Hardy Perennial Assortment

2 Iris, Crimson King—purple.....	40c
2 Iris, Don Quixote—yellow.....	70c
2 Iris, Ochroleuca — white and yellow	50c
2 Tritomas (New Miniature).....	60c
2 Hemerocallis (Day Lily) Flava..	50c
2 Hemerocallis (Day Lily) Fulva..	50c

12 plants regularly sold at.....\$3.20
The collection complete on sale
at

Full descriptions on all the above plants may be found elsewhere in this bulletin or in our 1934 general catalog.